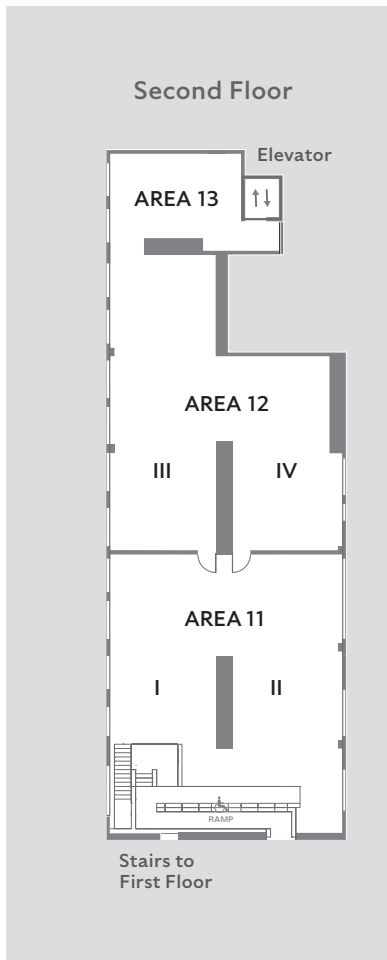


A GLORIOUS BEWILDERMENT: MARIE MENKEN'S 'VISUAL VARIATIONS ON NOGUCHI'

THE NOGUCHI MUSEUM, NEW YORK
SEP 27, 2023 – FEB 4, 2024

CHECKLIST



All works collection of The Isamu Noguchi Foundation and Garden Museum, New York, unless otherwise noted.

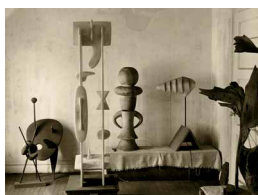
NMA = The Noguchi Museum Archives

Works by Isamu Noguchi
© INFGM/Artists Rights Society (ARS)

AREA 11 I. INTRODUCTION



FILM Marie Menken,
Visual Variations on Noguchi,
1945/46. Soundtrack 1953.
16mm, black and white,
sound, 4 min. Music by Lucia
Dlugoszewski. Courtesy
Anthology Film Archives.



Rudolph Burckhardt,
Photograph of storage room
at Noguchi's MacDougal
Alley studio, 1944.
2 7/8 x 3 7/8 in. NMA, 03198.



Lee Miller, *Isamu Noguchi*,
New York, 1946. 7 7/8 x 7 1/2 in.
© Lee Miller Archives,
England, 2023.
All rights reserved.
leemiller.co.uk.



Eliot Elisofon, Portrait of
Isamu Noguchi assembling
Figure in his MacDougal
Alley Studio, 1944. 10 x 8 in.
NMA, 03765. ©LIFE Photo
Collection/Time Inc.



Andre Kertesz, Portrait of
Isamu Noguchi in the
courtyard of his MacDougal
Alley Studio with *Bone
Sculpture*, c. 1945. 10 x 8 in.
NMA, 03211.



ON PEDESTAL Facsimile
of Gryphon Productions,
brochure for *Visual Variations
on Noguchi*, c. 1953. 4 x 19 in.
Erick Hawkins and Lucia
Dlugoszewski Papers, Box 21,
Folder 24, Music Division,
Library of Congress,
Washington, DC.

AREA 11 II. A FLYING SPIRIT OF MOVEMENT

Isamu Noguchi, Set elements for Martha Graham's *Hérodiade*, 1944. Plywood, paint. Dimensions variable. Gift of the J. M. Kaplan Fund (2002).

Backdrop fabricated by Danny Da Silva, 2023.



Arnold Eagle, Photograph of Martha Graham and May O'Donnell in Graham's *Hérodiade*, 1944. 10 x 8 in. NMA, 01577.



Isamu Noguchi, *E = MC²*, 1944. Papier-mâché. 13 5/8 x 11 3/4 x 10 in.



Isamu Noguchi, *Trinity*, 1945 (cast 1974). Bronze. 55 3/4 x 21 3/4 x 19 7/8 in. Fabricated by Treitel-Gratz Co.



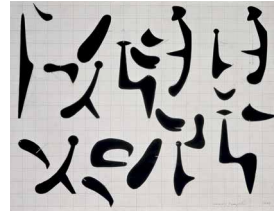
Isamu Noguchi, *The Seed*, 1946. Italian marble. 17 1/4 x 18 5/8 x 14 1/4 in.



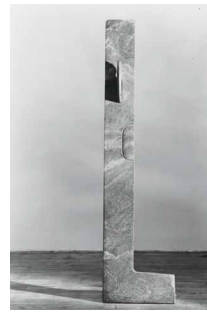
FILM Marie Menken, *Hurry!*, 1957. Single-channel video (transferred from 16mm film), color, sound, 3 min. Courtesy Anthology Film Archives.



IN TABLE CASE Archival materials related to *The Seasons*, 1947. Choreography by Merce Cunningham, music by John Cage, costumes and sets by Isamu Noguchi with contributions by Marie Menken. NMA, 153746, 153748, 153749, 153750, 153751, 01652, 01653, 01655, 151766, 151769, MS_PROJ_016_001, MS_PUB_036_001
Isamu Noguchi, Study for *The Seasons*, 1947. Pencil on paper.



Isamu Noguchi, *Five Worksheets for Sculpture*, c. 1945–47. 18 x 23 in. Pencil on cut graph paper.



Isamu Noguchi, *Untitled*, 1972. Serpentine, marble. 77 x 19 1/2 x 30 in.



IN TABLE CASE Photograph of Lucia Dlugoszewski with ladder harp, c. 1960. Photo: Daniel Kramer.
Facsimile of Dlugoszewski's "2 notes on the music for Marie Menken's film on Noguchi," March 1953.
Erick Hawkins and Lucia Dlugoszewski Papers, Music Division, Library of Congress, Washington, DC.

AREA 12 III. A PRECARIOUS EXISTENCE



Isamu Noguchi, *Untitled*, 1943 (partially reconstructed 1995). Wood. 30 ¼ x 16 ¼ x 7 ½ in.



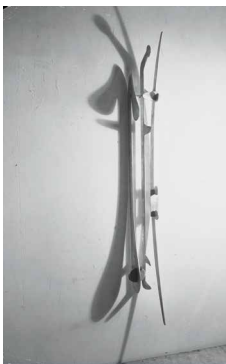
Isamu Noguchi, *Remembrance (Mortality)*, 1944. American mahogany. 50 ½ x 24 ¾ x 9 in.



Isamu Noguchi, *Mother and Child*, 1944–45. Onyx. 19 ¾ x 12 ¾ x 8 ¾ in.



Isamu Noguchi, *Figure*, 1945 (cast 1986). Bronze. 59 ⅞ x 21 ½ x 15 ⅞ in. Fabricated by Fonderia D'Arte Tesconi, Pietrasanta.



Isamu Noguchi, *Hanging Man*, 1945. Aluminum. 60 x 5 ⅞ x 7 ¼ in.

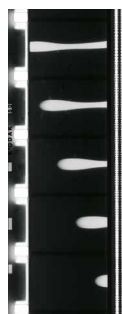
Isamu Noguchi, *Hanging Man*, 1973. Stainless steel. 90 ½ x 7 ⅞ x 10 ⅞ in.



Isamu Noguchi, *Avatar*, 1947 (cast 1972). Bronze, black patina. 80 x 33 x 24 in. Fabricated by Fonderia D'Arte Tesconi, Pietrasanta.



Isamu Noguchi, *Gregory*, 1945. Slate. 69 ⅞ x 14 ⅞ x 16 ½ in.



MURAL Film sequence from Menken's *Visual Variations on Noguchi* depicting Noguchi's *Gregory* (1945). Courtesy Anthology Film Archives.



Isamu Noguchi, *Two Worksheets for Sculpture* (including elements for *Gregory* at bottom), c. 1945. Pencil on cut graph paper. 7 ½ x 19 in.; 8 ¾ x 8 in.



Isamu Noguchi, *Little Slate*, 1945. Slate. 11 ¾ x 11 ¾ x 6 ¾ in.

AREA 12 IV. LIGHT THE LIGHTS



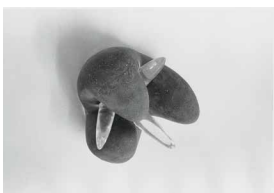
Marie Menken, *Untitled (Folding Screen)*, 1956. Paint, seashells, and sand on screen. Anthology Film Archives. Gift of Lorraine Rothbard Gleckman and Family.



FILM Marie Menken, *Lights*, 1966. Single-channel video (transferred from 16mm film), color, silent, 6.5 min. Courtesy Anthology Film Archives.



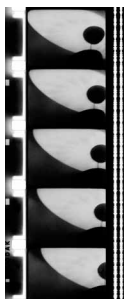
FILM Marie Menken, *Moonplay*, 1964. Single-channel video (transferred from 16mm film), black and white, sound, 5 min. Courtesy Anthology Film Archives.



Isamu Noguchi, *Red Lunar Fist*, 1944. Magnesite, plastic, resin, electric components. 7 1/8 x 8 3/8 x 8 3/4 in.



Isamu Noguchi, *Floating Lunar*, 1945. Magnesite, electric components. 3 x 29 7/8 x 22 1/2 in. Gift of Michael and Georgia de Havenon (2021).



MURAL Film sequence from Menken's *Visual Variations on Noguchi's lost Lunar Sculpture Variation* (c. 1944). Courtesy Anthology Film Archives.



IN TABLE CASE Photographs of Isamu Noguchi's since-destroyed illuminated ceiling for the "Information Center" in the public lobby of the Time & Life Building, One Rockefeller Center, New York, c. 1944. NMA, 01643, 01644.

Program for Gertrude Stein's *Doctor Faustus Lights the Lights* (1938) at The Living Theatre, New York, 1951. Private collection.

Gertrude Stein, *Doctor Faustus Lights the Lights* (1938), in *Gertrude Stein: Writings 1932-1946*, ed. Catharine R. Stimpson and Harriet Chessman (New York: The Library of America, 1998).



Isamu Noguchi, *Study for Musical Weathervane*, 1933. Conté crayon on paper. 17 x 12 in.



Isamu Noguchi, *Lunar Lamp Prototype*, c. 1951. Fiberglass resin, metal, electric components. 33 1/4 x 12 7/8 x 12 7/8 in.



Isamu Noguchi, *Lunar Infant*, 1944. Magnesite, wood, electric components. 22 x 16 x 16 in.

AREA 13 READING ROOM



Portrait of Isamu Noguchi with *Study for Luminous Plastic Sculpture*, 1943. NMA, 03766.



Portrait of Marie Menken. Photo: William Wood.



Portrait of Lucia Dlugoszewski playing timbre piano. Courtesy of the Erick Hawkins Dance Foundation, Inc.

VIDEO MONTAGE

Excerpts from digitized film reels (c. 1968–70). Multimedia Collection, The Noguchi Museum Archives:

Excerpts from *The Creative Adventures of Isamu Noguchi* (1980), produced by Bruce Bassett and Whitgate Productions, NMA, AV_1VT_006_1980.

Arnold Eagle, night footage of Expo '70 fountains, Japan's World Fair in Suita, Osaka, Japan, 1970. NMA, AV_F16_053_c1970.

Arnold Eagle, Noguchi working at Henraux in Querceta, Italy, c. 1970. NMA, AV_F16_039_c1970.

Excerpts from *Noguchi: A Sculptor's World* (1973), Directed by Arnold Eagle. NMA, AV_F16_001_1973.

Arnold Eagle, footage of Gardens for UNESCO, Paris, France. c. 1970. NMA, AV_F16_043_c1970.

Arnold Eagle, Noguchi walking through his exhibition *Shapes of Light* at Cordier & Ekstrom Gallery, December 4, 1968–January 4, 1969. NMA, AV_F16_028_c1970.

Dimitri Hadzi, unedited footage of Isamu Noguchi playing with children on *Octetra* in Spoleto, Italy, 1968. NMA, AV_F16_005_1968.

Arnold Eagle, clips of *Appalachian Spring*, choreography by Martha Graham with set design by Isamu Noguchi, c. 1970. NMA, AV_F16_079_c1970.

SELECTED READINGS

P. Adams Sitney, "Marie Menken and the Somatic Camera," in *Eyes Upside Down: Visionary Filmmakers and the Heritage of Emerson* (Oxford University Press, 2008).

Stan Brakhage, "Marie Menken," in *Film at Wit's End: Eight Avant-Garde Filmmakers* (McPherson, 1991).

"On Marie Menken," in *Brakhage Scrapbook: Collected Writings 1964–1980*, ed. Robert A. Haller (Documentext, 1982).

Melissa Ragona, "Swing and Sway: Marie Menken's Filmic Events," in *Women's Experimental Cinema: Critical Frameworks*, ed. Robin Blaetz (Duke University Press, 2007).

Parker Tyler, "In the Pad: Plastique Versus Surplot," in *Underground Film: A Critical History* (Da Capo Press, 1995).

Amy Beal, *Terrible Freedom: The Life and Work of Lucia Dlugoszewski* (University of California Press, 2022).

"Meanings in Modern Sculpture," in *Isamu Noguchi: Essays and Conversations*, ed. Diane Apostolos-Cappadona and Bruce Altshuler (Harry N. Abrams, 1994).