

Noguchi Showroom The Blossoming Akari



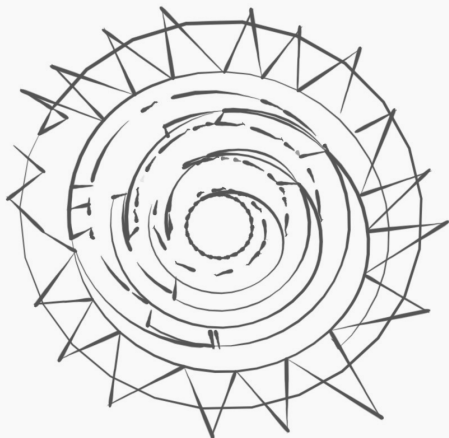


Concept Statement

The 'Blossoming Akari' showroom is envisioned as an immersive environment of light. Inspired from Akari's natural bamboo and washi paper materials, the display fixtures are conceived of as an abstract metaphor of blossoming trees. The ceiling and floor mounted fixtures are built of spiraling bamboo frameworks that aim to capture a dynamic gesture of growth and transformation. The Akari sculptures themselves are installed in the bamboo structures to represent blossoming flowers of illumination. The circulation within the showroom incorporates seating to further evoke a simulated natural environment akin to blossoming trees within a park.

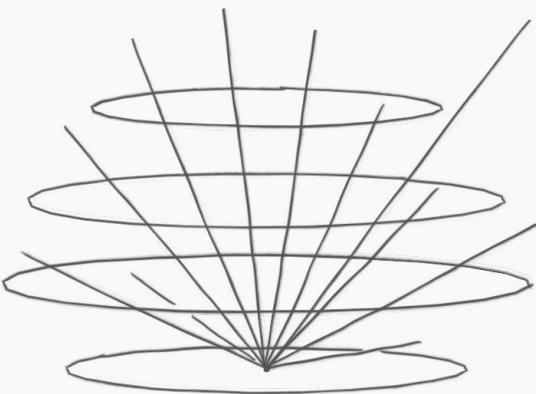
*"Like the beauty of falling leaves and the cherry blossom,
Noguchi wrote, Akari are poetic, ephemeral, and tentative."
— Noguchi.org*

Sculpture Analysis



Shield Illumination

This **softness and warmth** of light comes from the **paper bamboo cover** used to **shield** direct light from the center. With the paper shield, light comes blurred and soft, the color also increase warmth of the light. The oval lantern cover is not only aesthetically blessing, but also functionally useful to create soft light and warm atmosphere.



Light Blossom

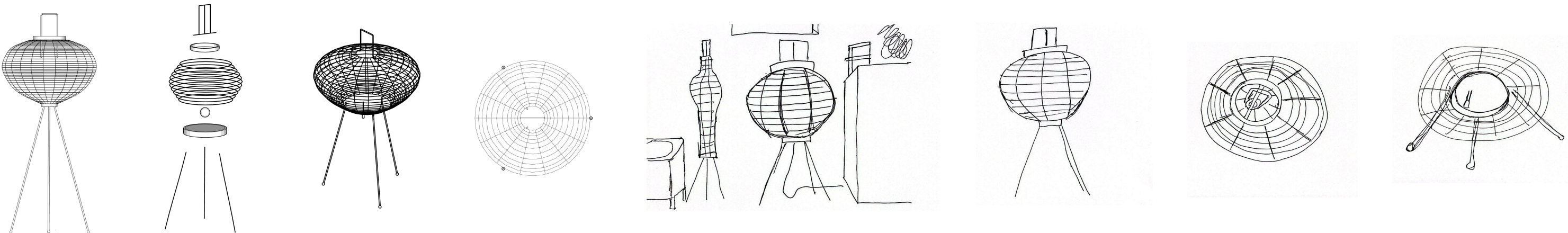
It is defined when light shine through the lantern frames to create illuminations. The light beam movement looks like the flower, the **blossom of pedals**. This system illustrates the light structure as flower petals blossom expands and grows from the center.

Akari 10A

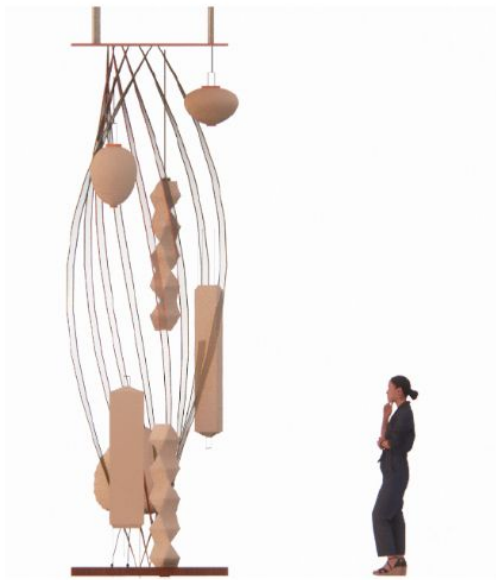
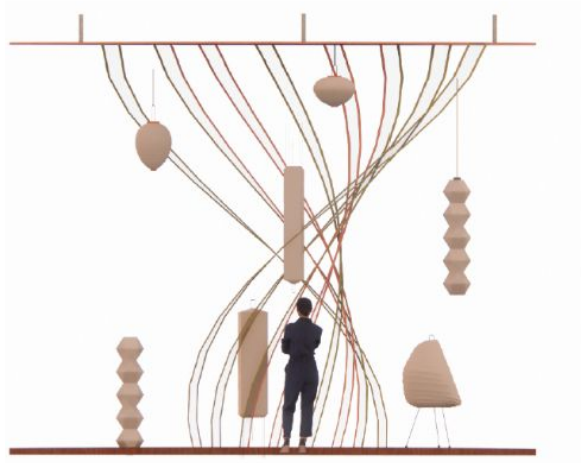


<https://shop.noguchi.org/collections/akari-light-sculptures>

Analysis drawings, Systems Derived

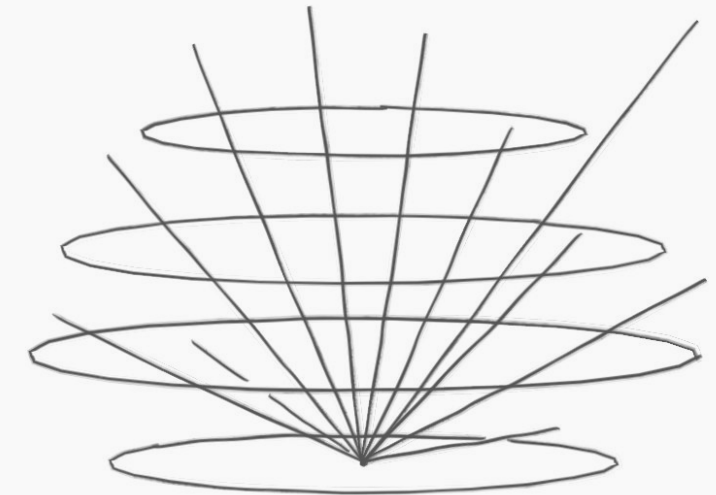


Taxonomy



Illustrations: light sculptures within the mechanisms

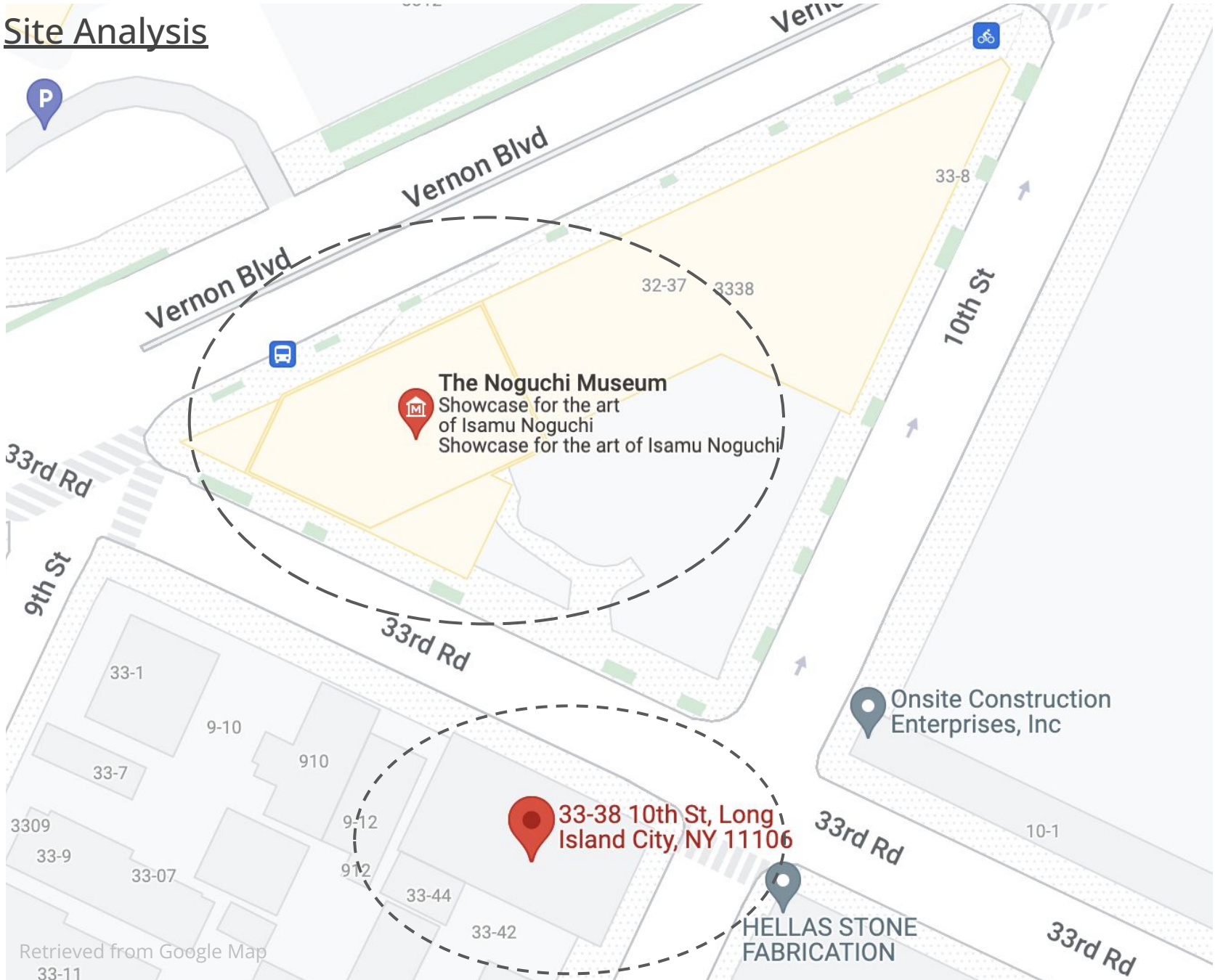
Viewing Mechanism



Light Blossom

The system is an integration of akari light and the nature. Structures mimic the growth and movement of flower petals to rotate and surrounds the center. Combining light and flowers together are aesthetic. The system provides an immersed viewing experience of akari light, as surrounded by the blossom of light.

Site Analysis



Materials:

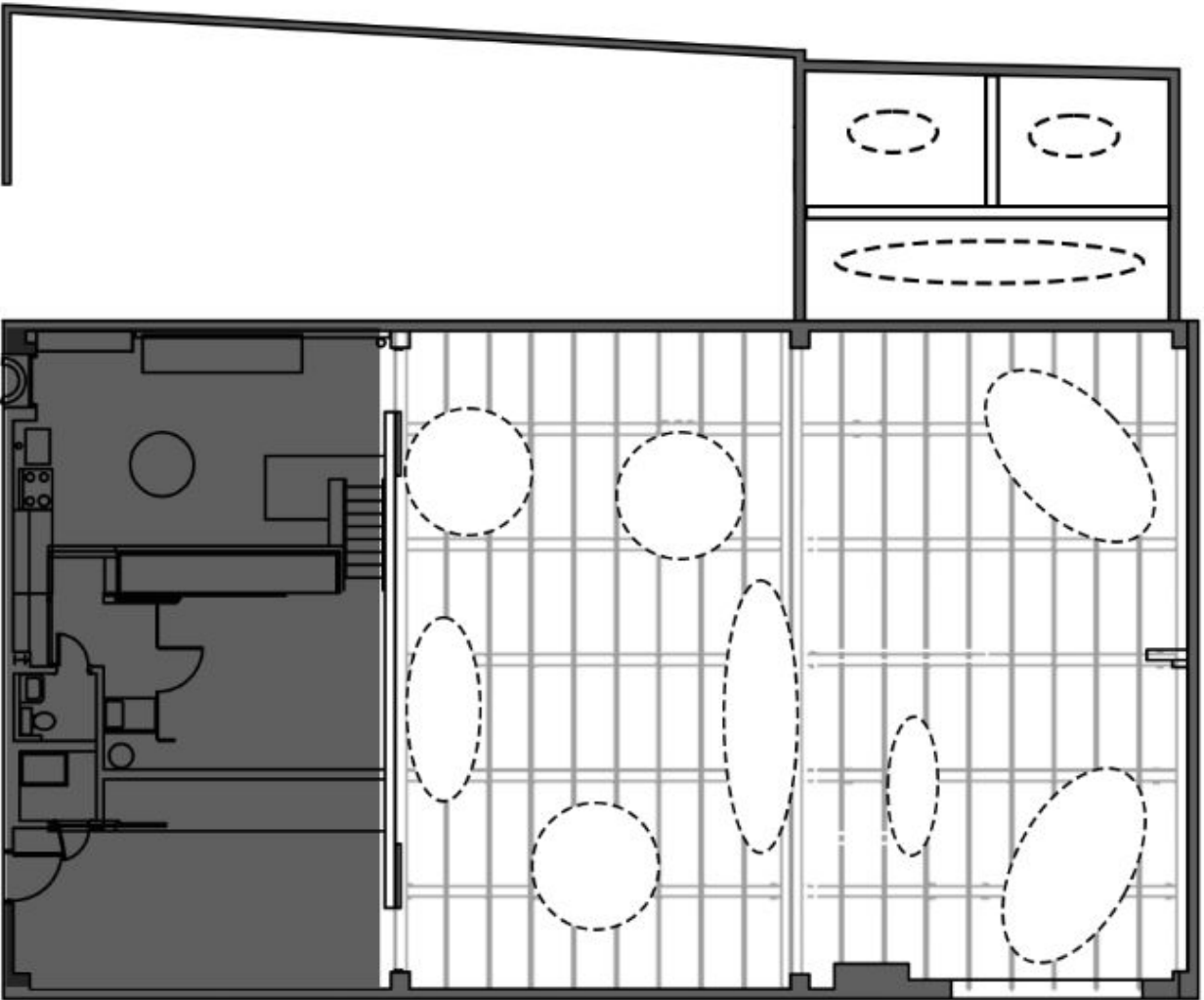
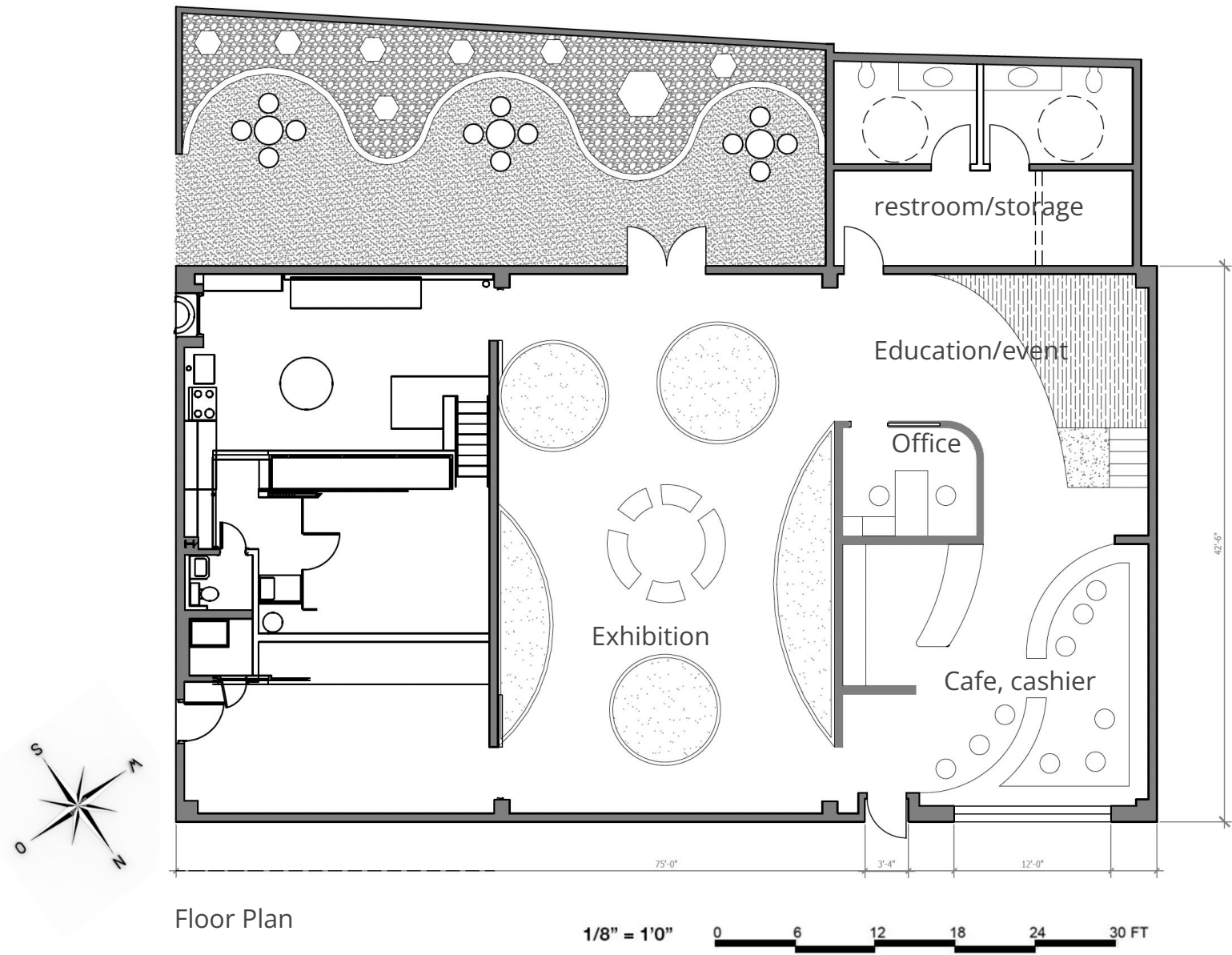
- Concrete
- Brick
- Steel
- Glass
- Dark color tone



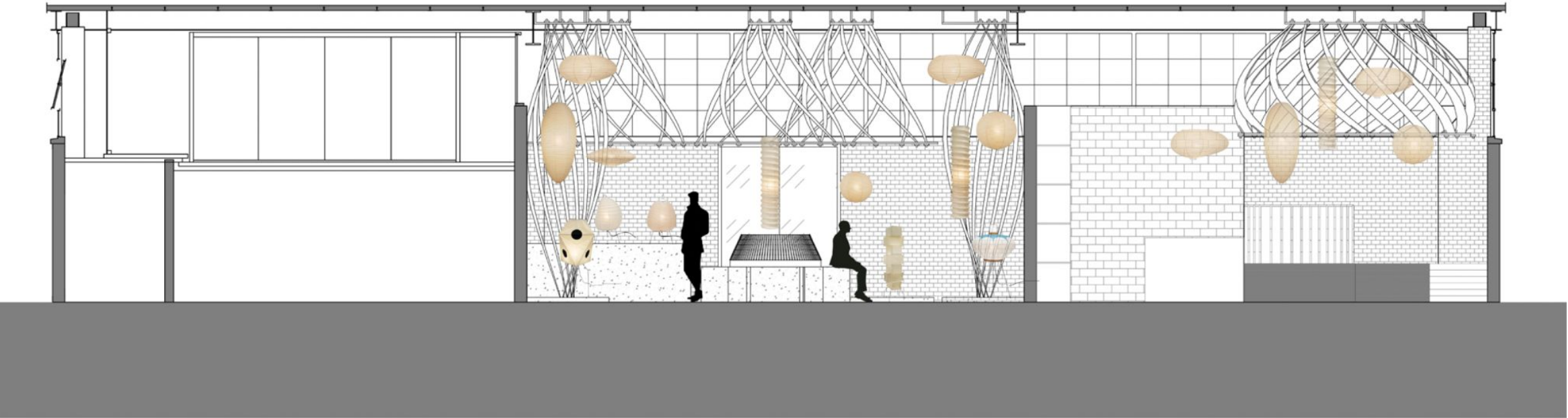
Characteristics of Streets and Surroundings:

- Urban
- Historic
- Old
- Quiet, not crowded
- Less developed
- No bodegas or shops nearby

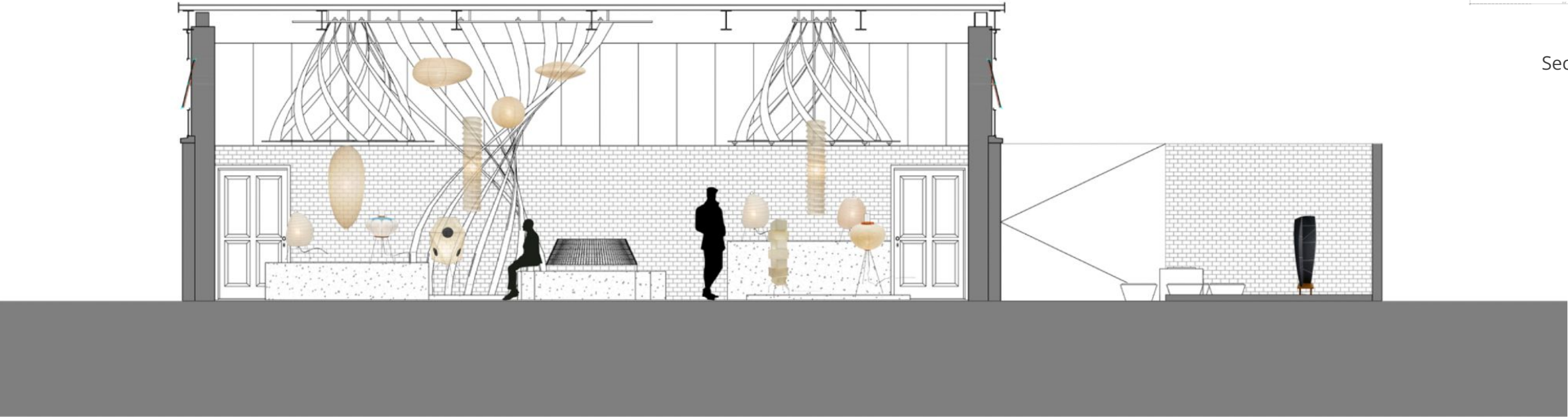
Floor Plan and RCP



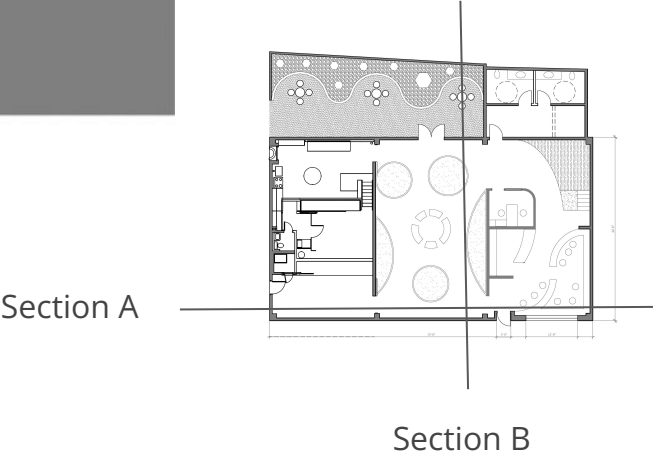
Sections



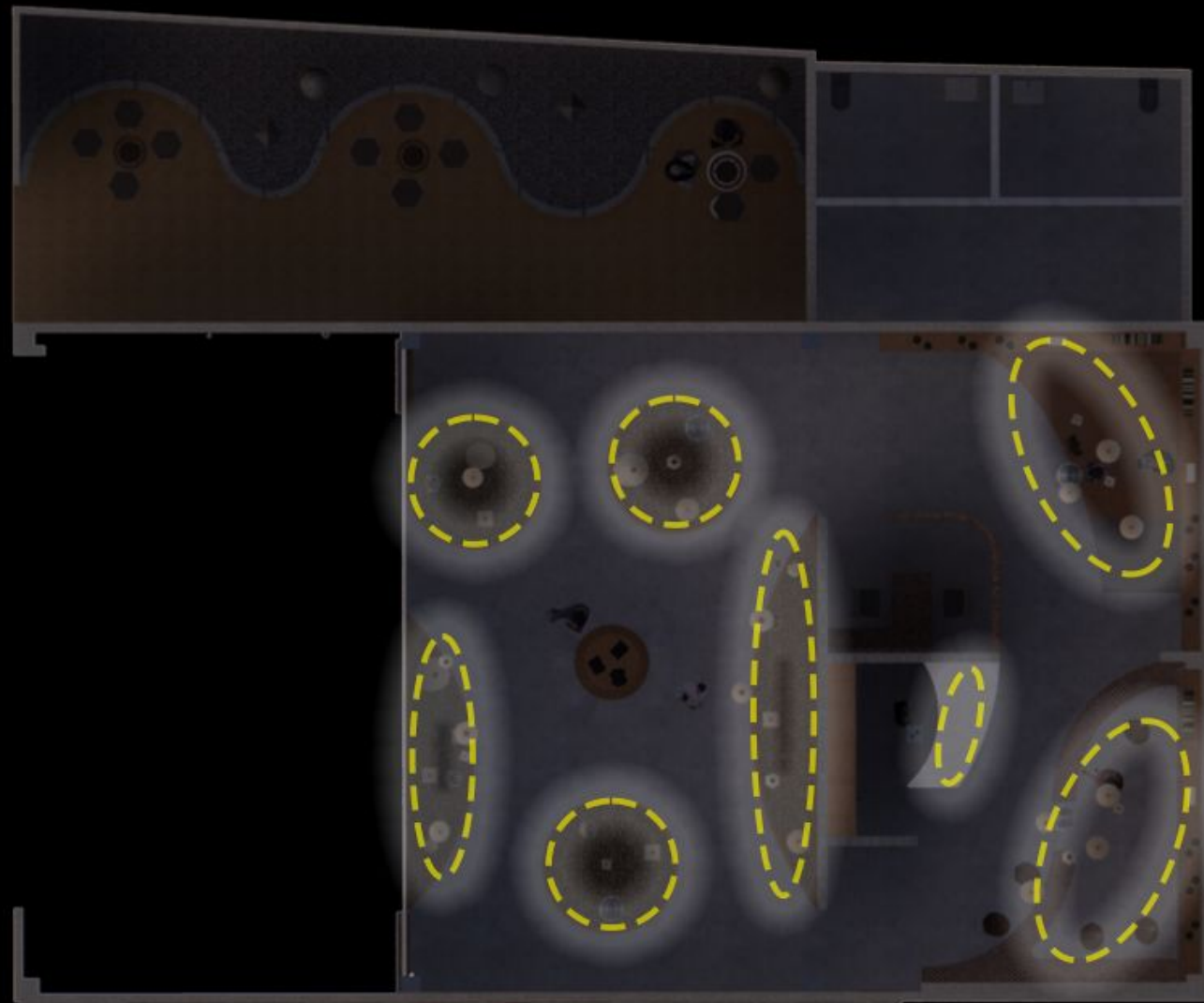
Section A: exhibition area and education/event area shown.



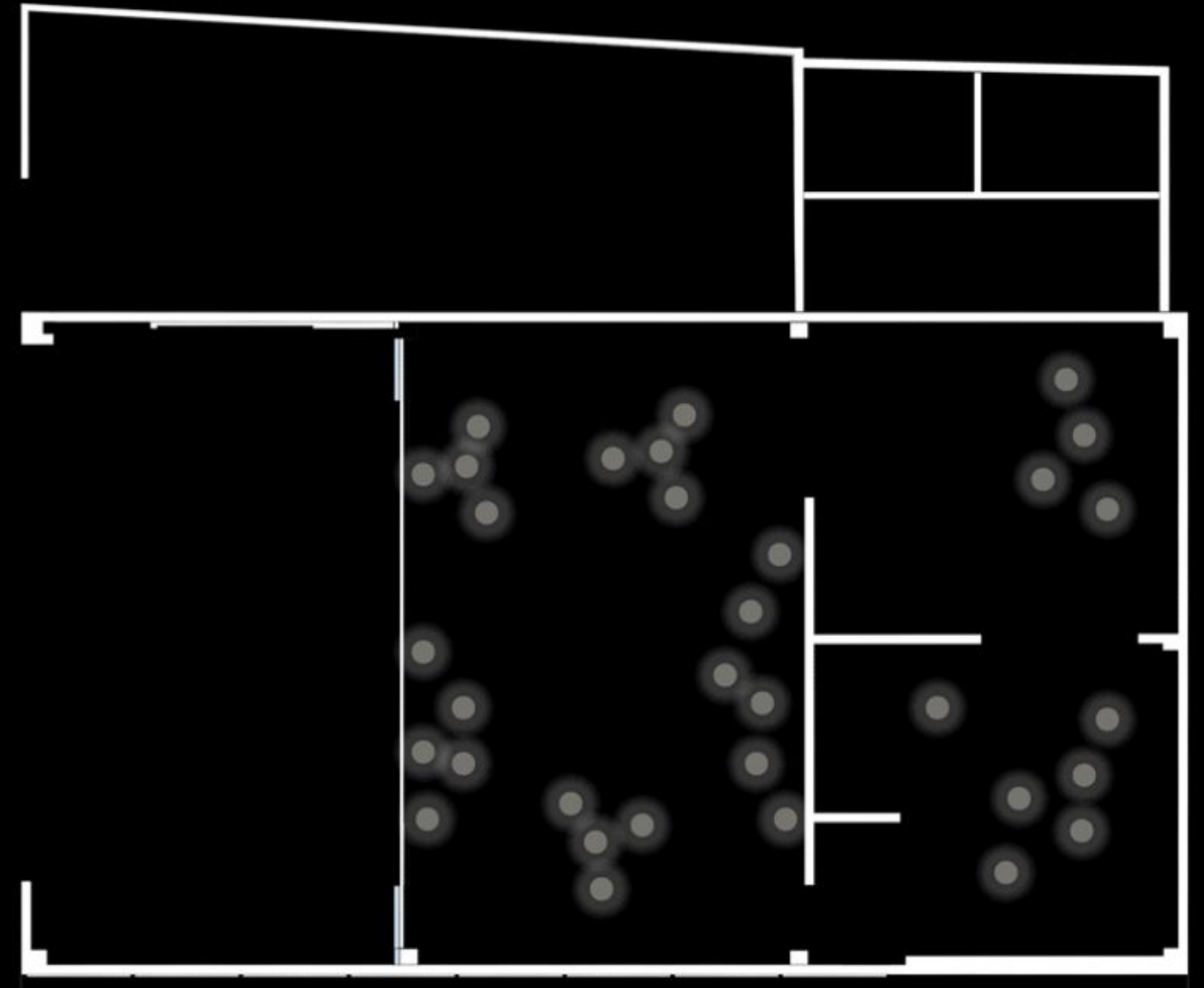
Section B: exhibition area and sculpture garden shown



Light Distribution



Akari Light Distribution



Illumination effects of the light

Area Distribution: exhibition

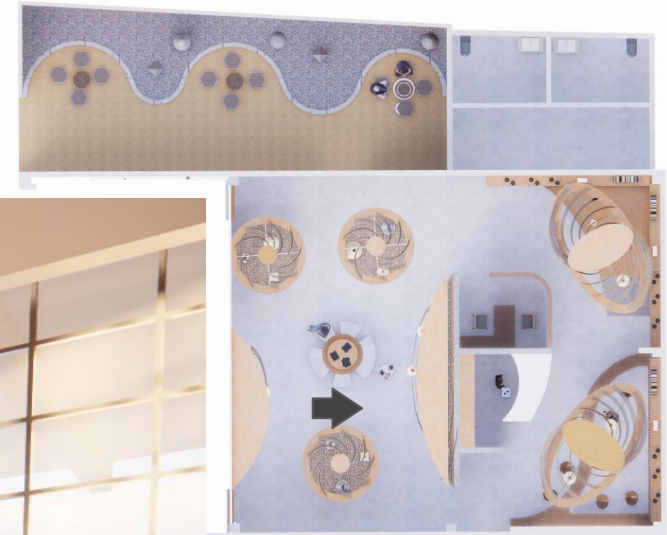


Illustration: exhibition area

Area Distribution: cafe, cashier

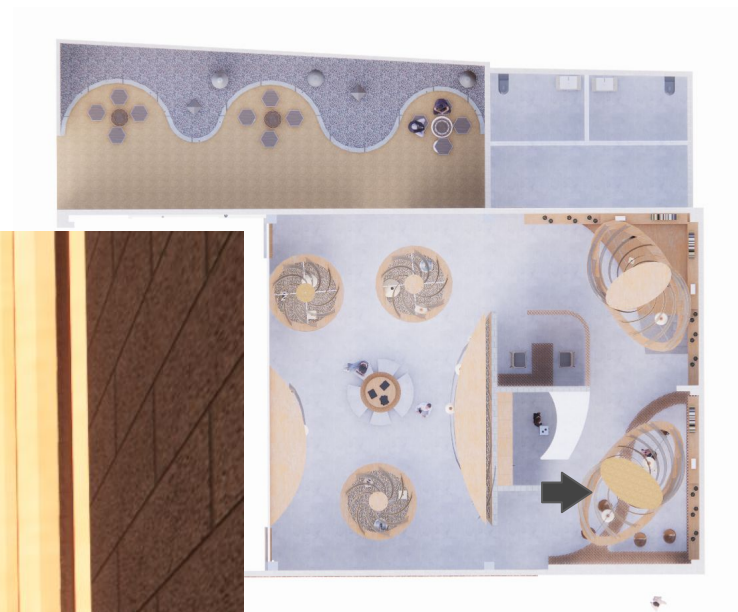


Illustration: cashier and cafe

Area Distribution: education, event

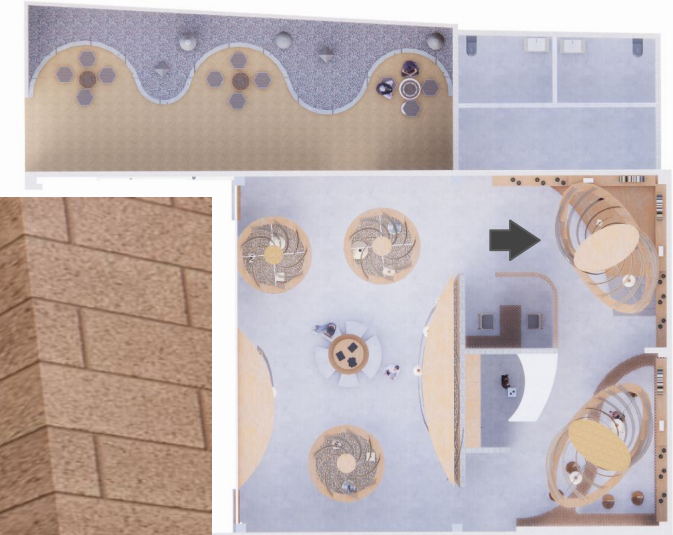


Illustration: education and event

Area Distribution: sculpture garden

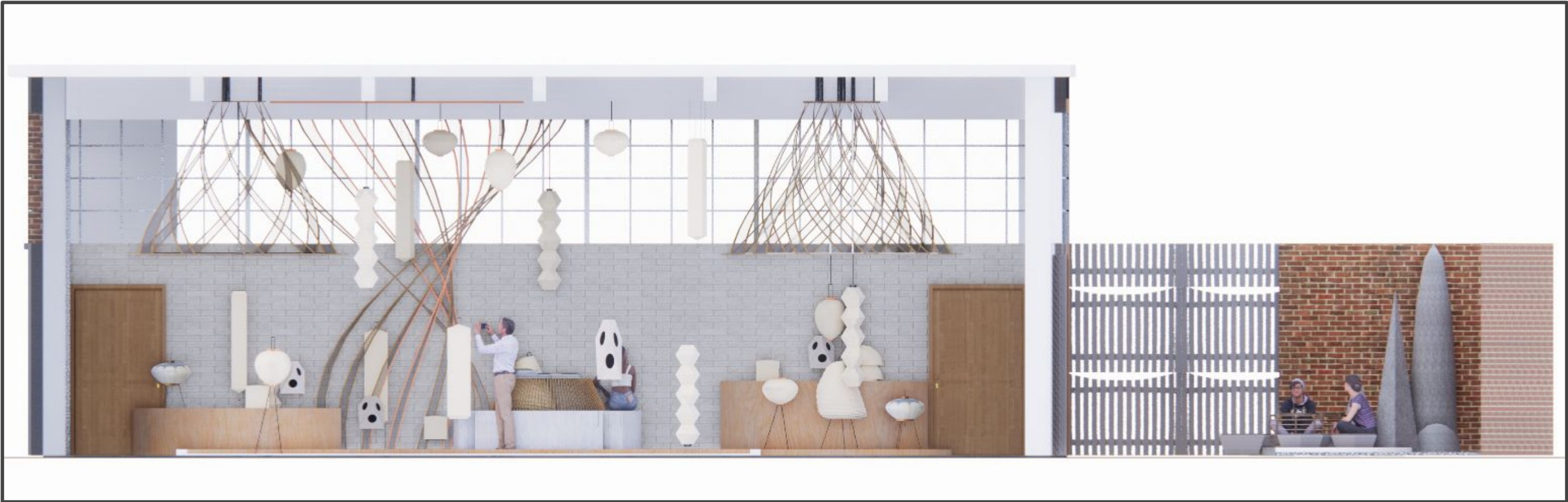


Illustration: sculpture garden with seating

Critical Sections



Section A: exhibition area and education/event area shown.



Section B: exhibition area and sculpture garden shown

Models



Materials



Kirei board: a sustainable wood-finish material



Bamboo ribbon: from akari light documentary



Furniture, Light

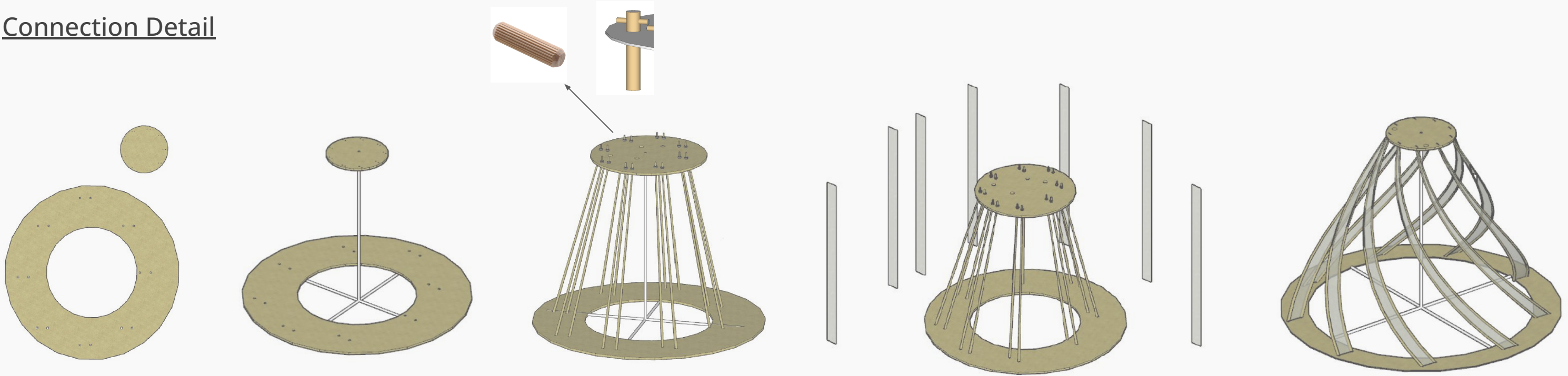


Illustration showing store cashier, cafe and event area

Color

E0D8CA	B8B09B	CAA472	BA8C63
224 216 202	184 176 155	202 164 114	186 140 99

Connection Detail



Assembly

Step 1: Cut two pieces of kirei board to above shape and punch holes.

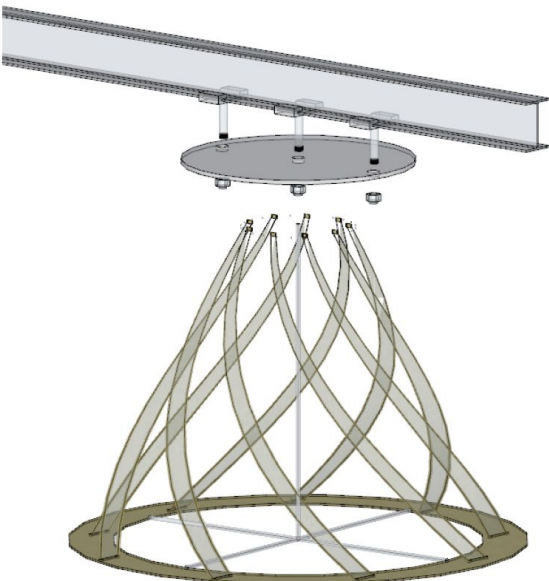
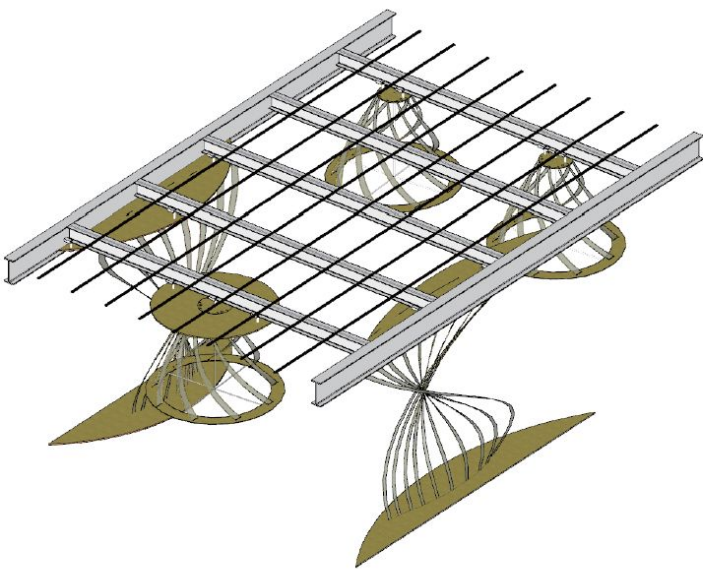
Step 2: Connect the two round pieces with aluminum.

Step 3: Connect bamboo ribbon to the two prices as shown through the punched holes. Place wood dowel pin on the other side to secure the bamboo in place.

Step 4: Glue mulberry bark paper onto the bamboo frame.

Step 5: Rotate the two pieces against each other for 90 degree.

Installation



Utilize pre-existing beams to set up a suspended ceiling systems where the structure can connects to.