

Another land for Akari

"light things are handled as if they're heavy, heavy things as if they are weightless—in this way, one finds an almost complete control over nature instead of being dominated by it."

— Isamu Noguchi



Shan Zhang
Instructor: David Ling
INT 602 2022
Email: szhang32@pratt.edu

Inside the showroom



Akari

Nine floating Fountains, 1970

Stone of Spiritual Understanding, 1962

End Piece, 1974

www.noguchi.org

Concept Statement

“Floating mass”

The point of this project is to use different scales and locations of stones as the representation of the concept “Floating Mass”, creating a dramatic space since Noguchi uses lots of abstract works in stone to demonstrate his understanding of the relationship between humans and nature.

Combining modern construction technology with natural materials to provide a surreal spatial experience. Using the floating system that could accommodate flexible use and reconfiguration, the suspended stones will be enlightened by different Akari. Presents a new transformation of nature in the interior space, also showing the existence of floating as a state of weightlessness.

Applying the unstable seats that could integrate the feeling of weightlessness to create a playful environment, and encourage people to interact with Akari. Allowing the customers to escape from gravity for a moment, and bring an experiential journey for offline purchasing.

Concept Development

Concept Driver and Design Language

End Piece, 1974



Costume for a Stone, 1982



Nine floating Fountains



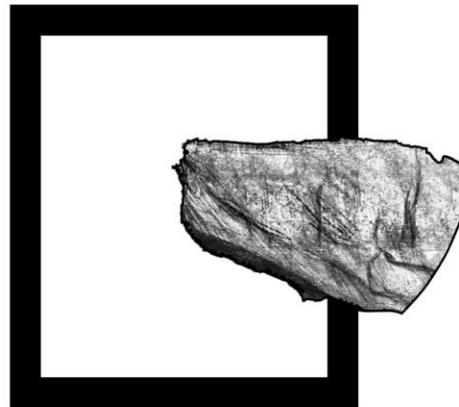
Akari 16A



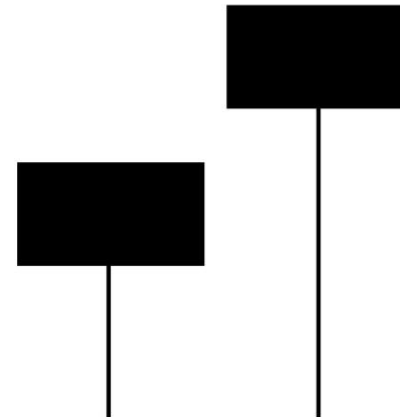
Juxtaposition of opposites



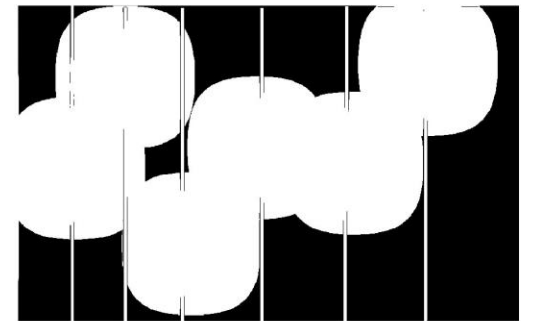
Stick structure



Floating Mass

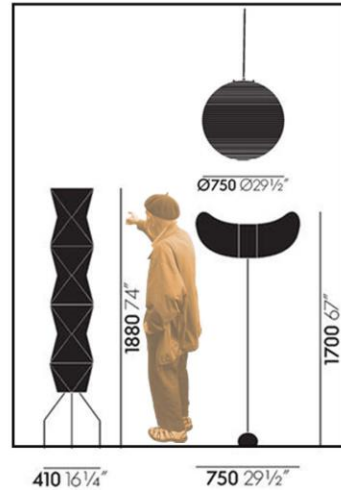
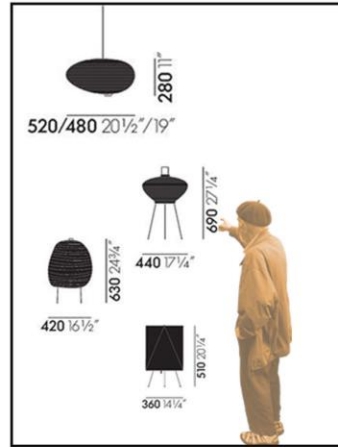
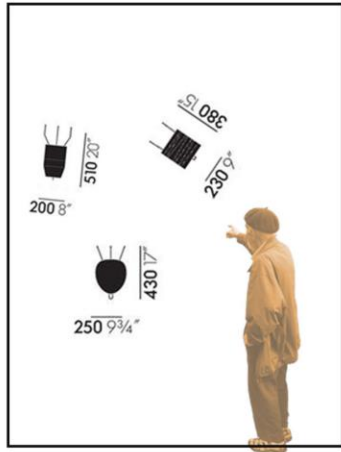


Motion in stillness

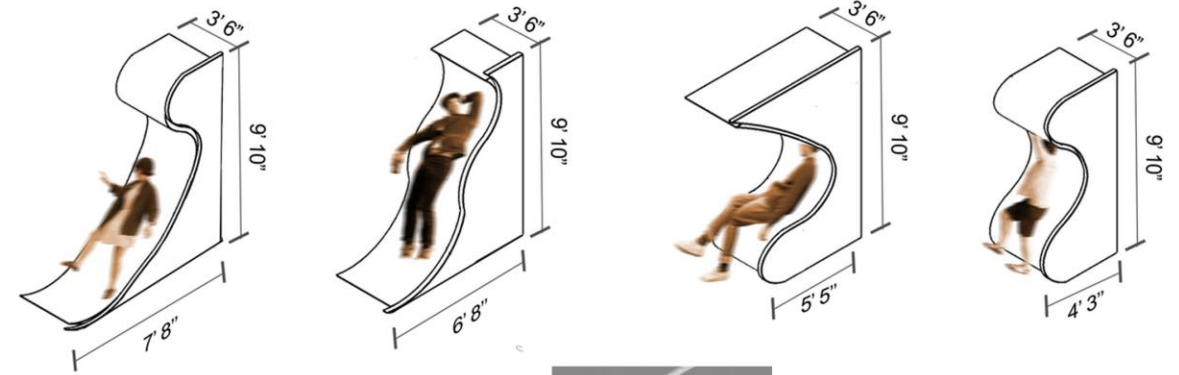


Taxonomy

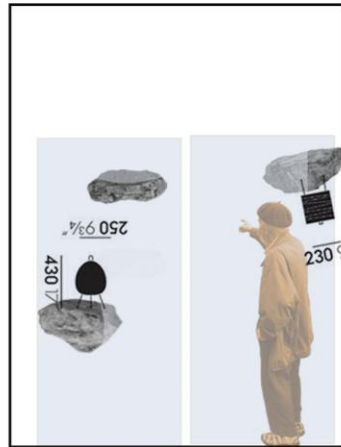
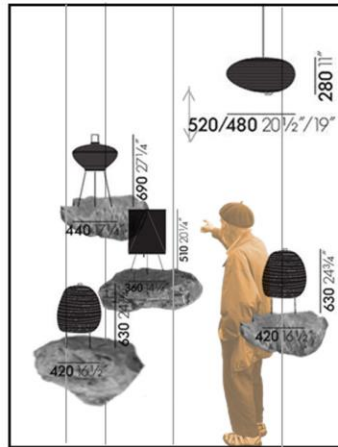
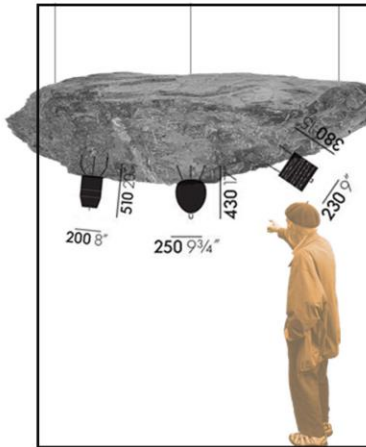
Integrate the design language in site



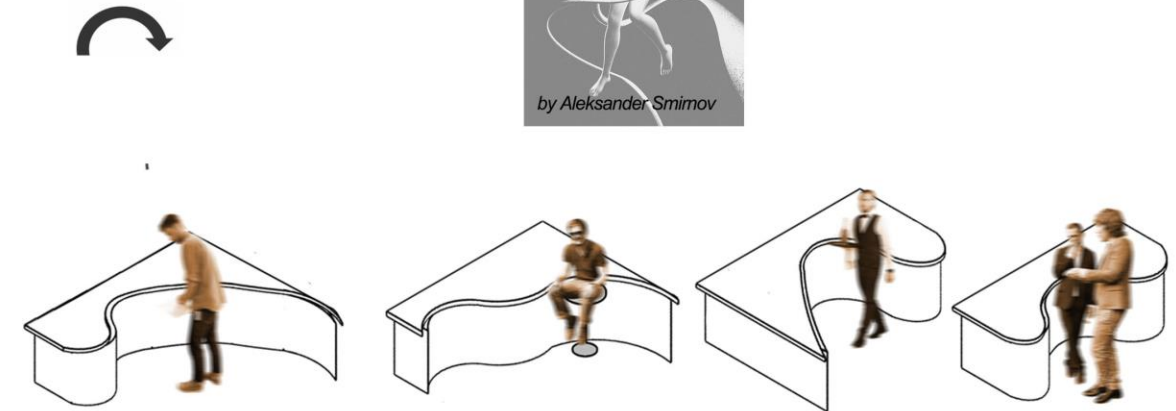
Location of Akari In different posture



Weightless seat for showroom



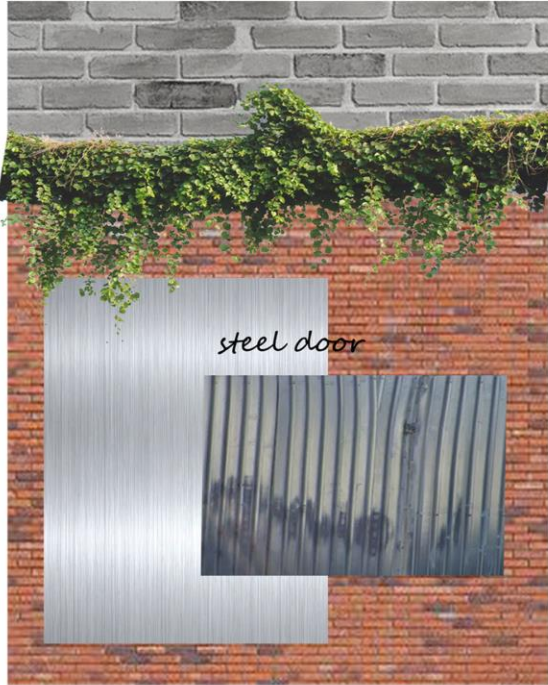
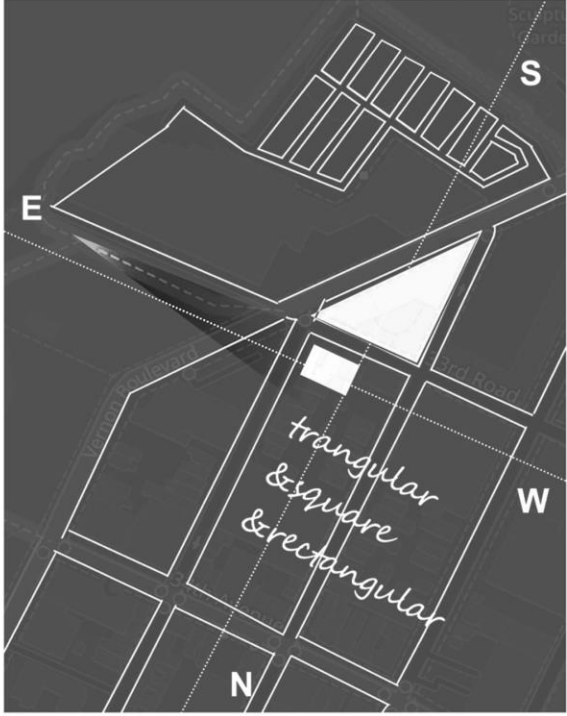
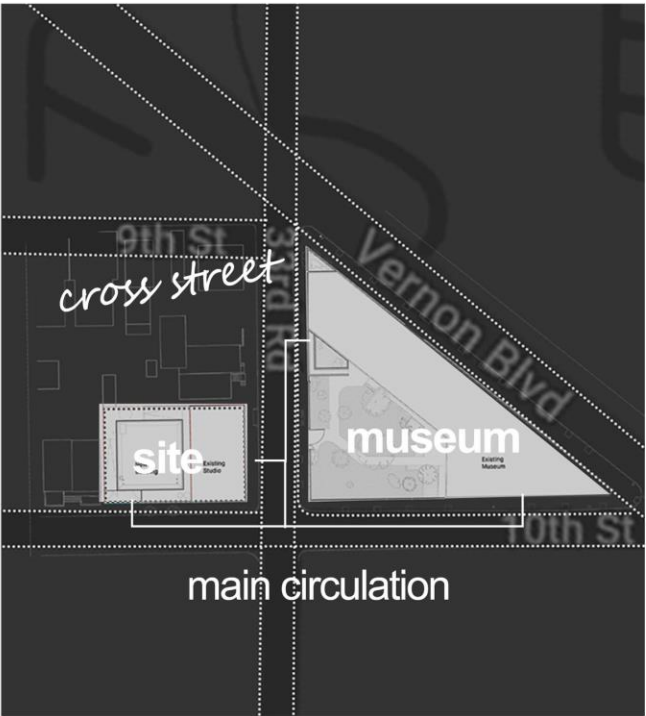
Floating system In different area



Turned as table for event/education

Site Analysis

Circulation between Noguchi museum;
Building Materials; Visibility



Exterior Building materials



Interior Building materials



Circulation and Visibility

change the garage door to the glass windows so that it could be functioned as a window display, increasing the likelihood of both foot traffic and impulse purchases. Improving visibility from the interior and exterior.

Keep the existing entrance since it is the closest door from the Noguchi museum

Material Research

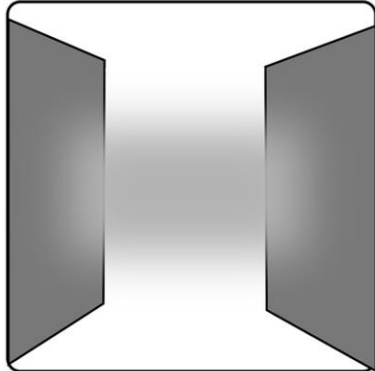
Combination of natural material and materiality



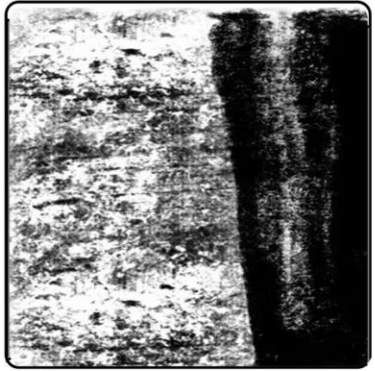
Industrial felt
Glass
Corten Steel
Wood

Sustainable

Diagram

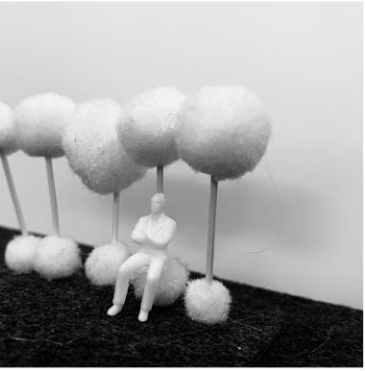


Industrial felt



Stone

Material Model



Materiality

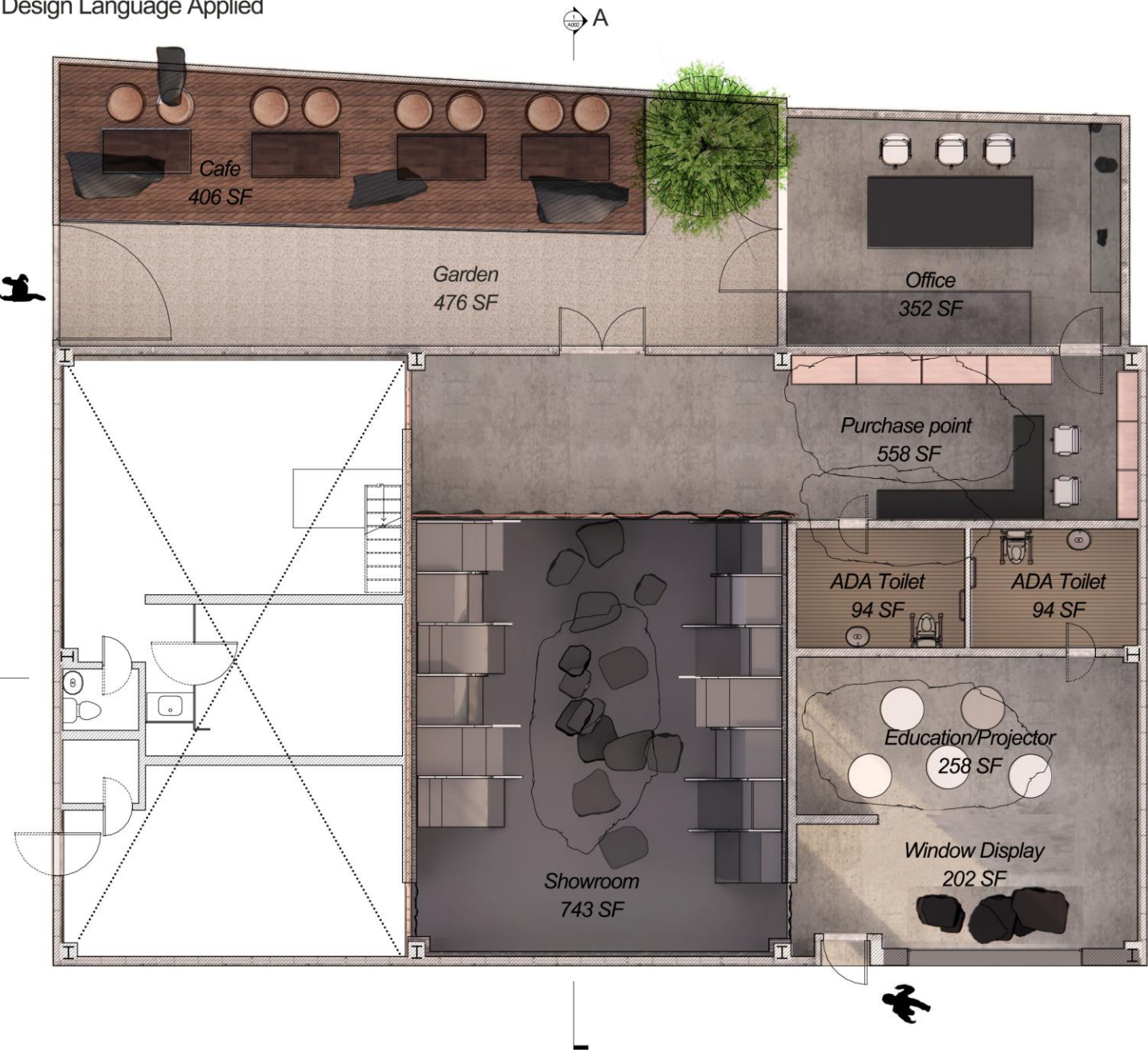
Soft

Diffuse reflection

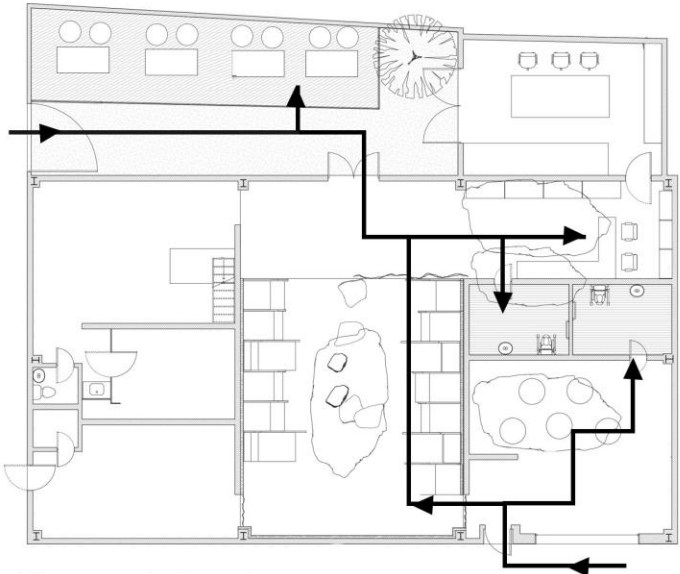
Polished/Rough
Organic

Rendered Plan

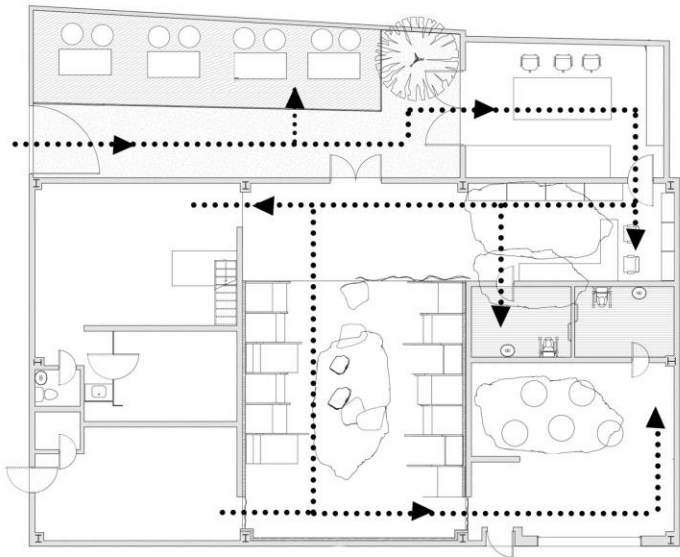
Design Language Applied



Movement of customers



Movement of employee



Rendered Sections

Design Language Applied



Section A 1/4"=1'-0"

Different heights of stones and Akari

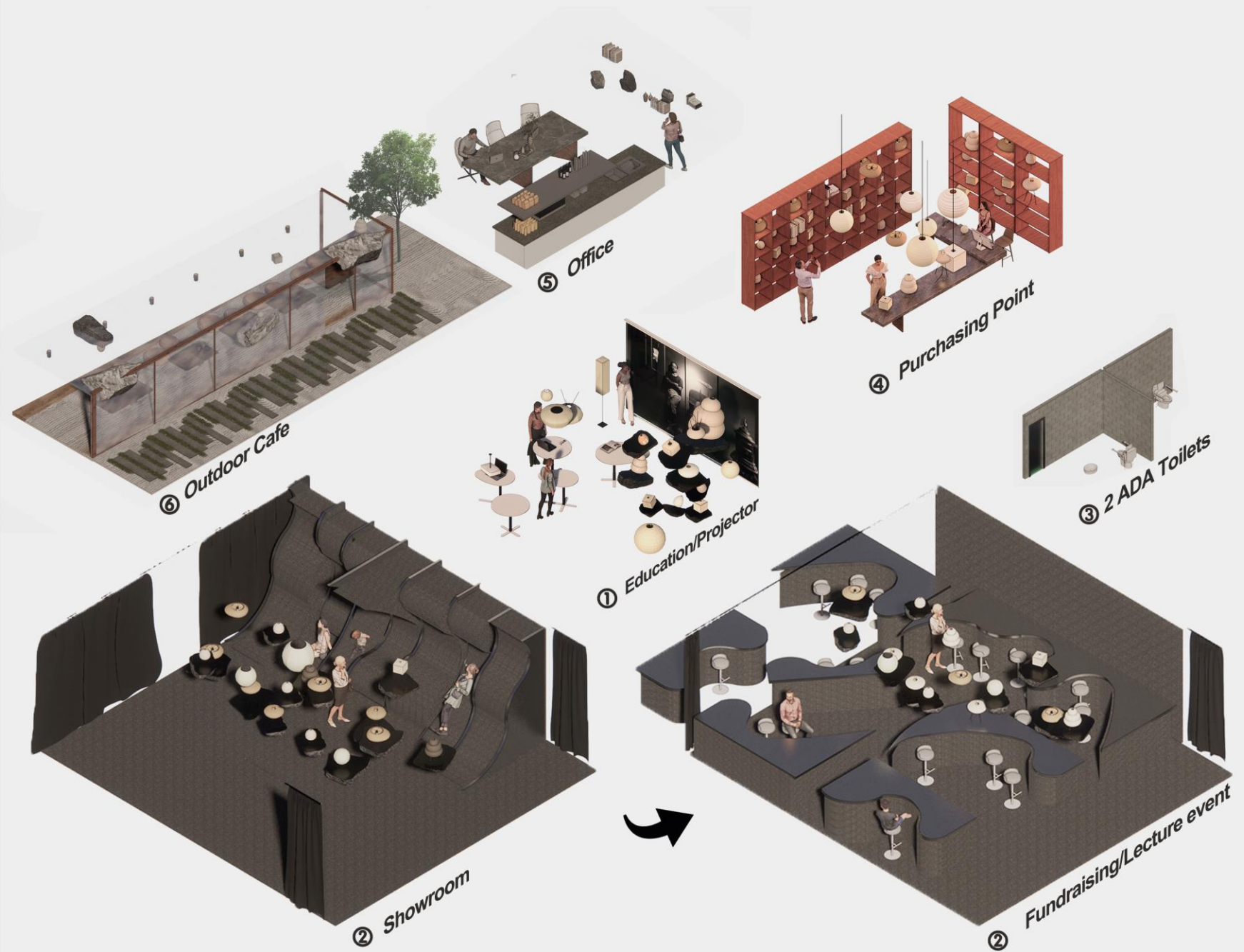
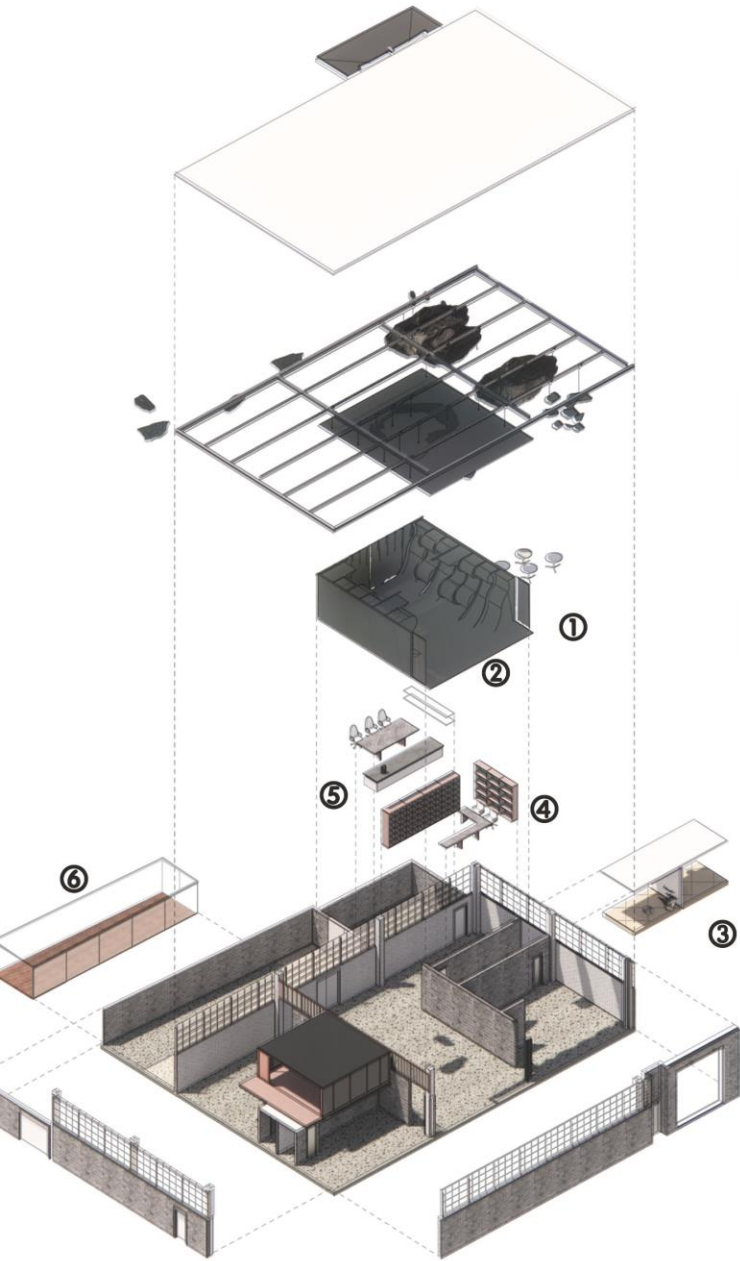


Section B 1/4"=1'-0"

Encouraged to interact with Akari

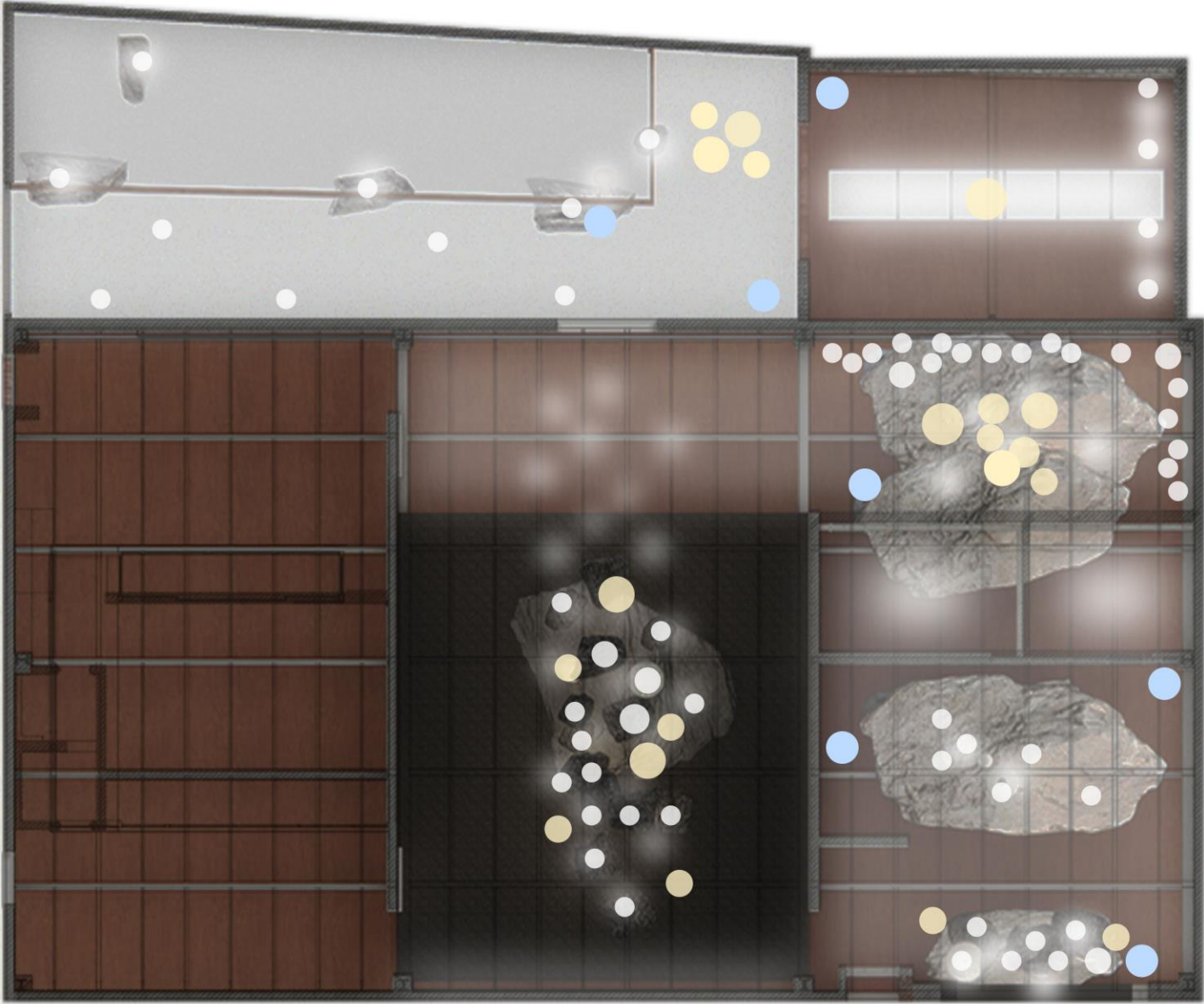
Exploded Axo

Axo of the different program area



Reflected Ceiling Plan

Rcp and Akari Display



Location of Akari

About 90-100 Akaris in the space

● Table Akari - Small

10" - 17"



Table Akari - Middle

10" - 30"



● Ceiling Akari - Middle

15" - 20"



● Ceiling Akari - Large

20" - 40"



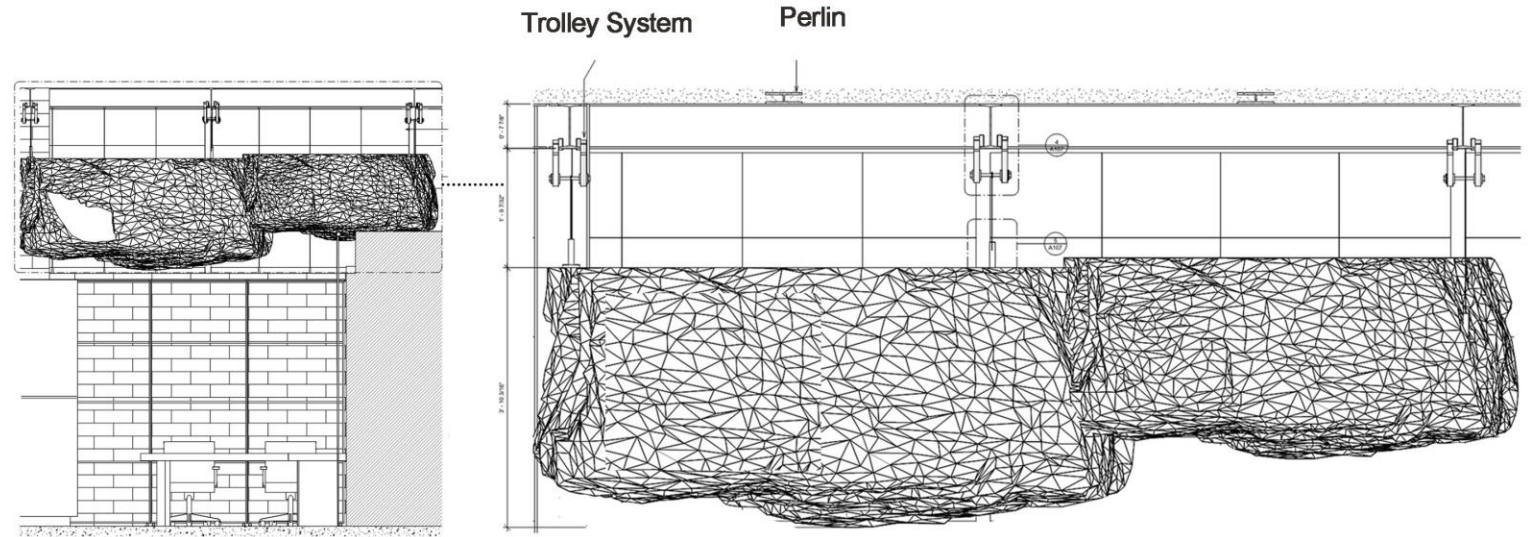
● Floor Akari - Middle

10" - 30"

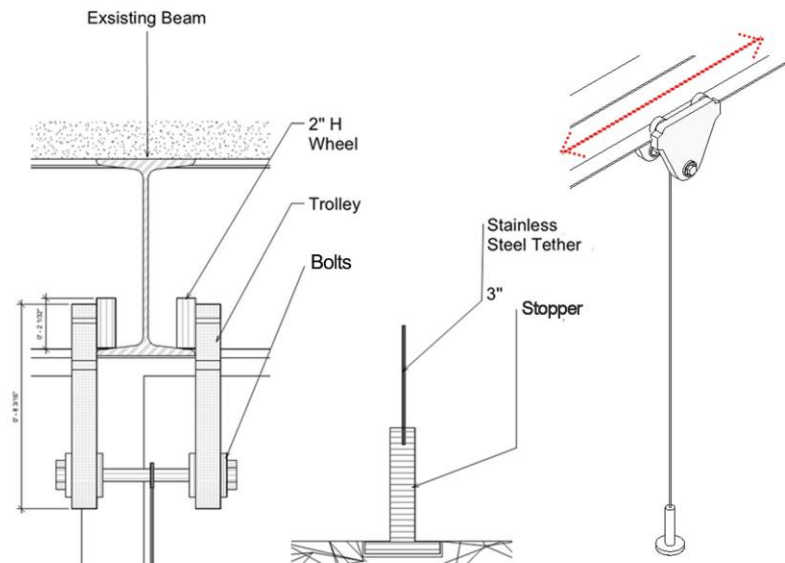


Assembly drawings

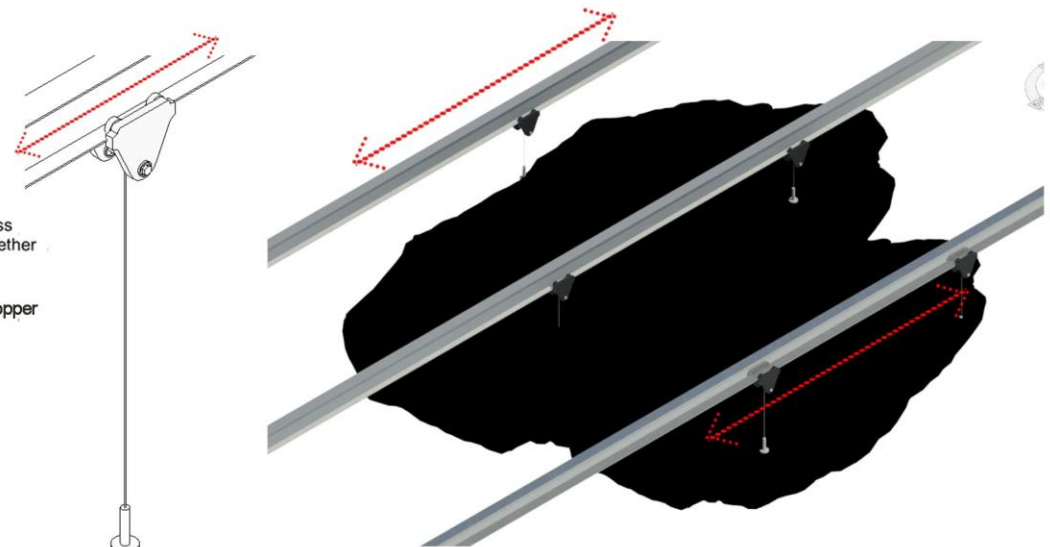
Floating system for ceiling stone



Callout Detail



Dimension of the Joinery



Axo of joinery

Moving Track

Entrance Rendering

View from the street



View from the main entrance



View in front of the Cafe door

Using the two doors as the entrance. The main entrance is the one next to the window display, increasing the curiosity of the people that pass by. Another entrance is for the one who came from another street, also for the passengers who just want to have a cup of coffee, making the Akari be noticed by different kinds of passengers.

Education Rendering

View from the Education projector area



Watching video of Noguchi

Showroom Rendering

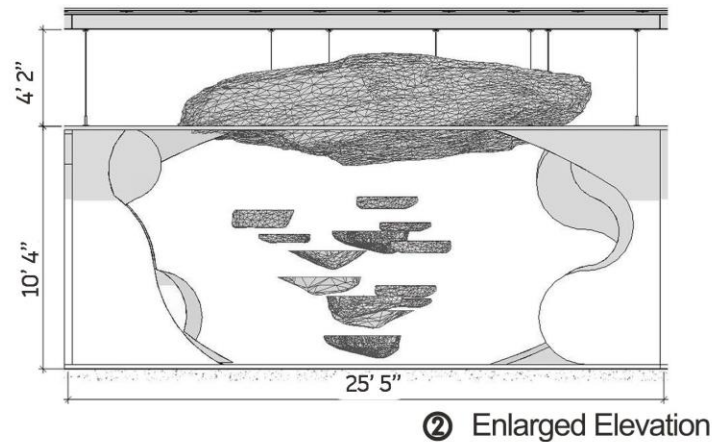
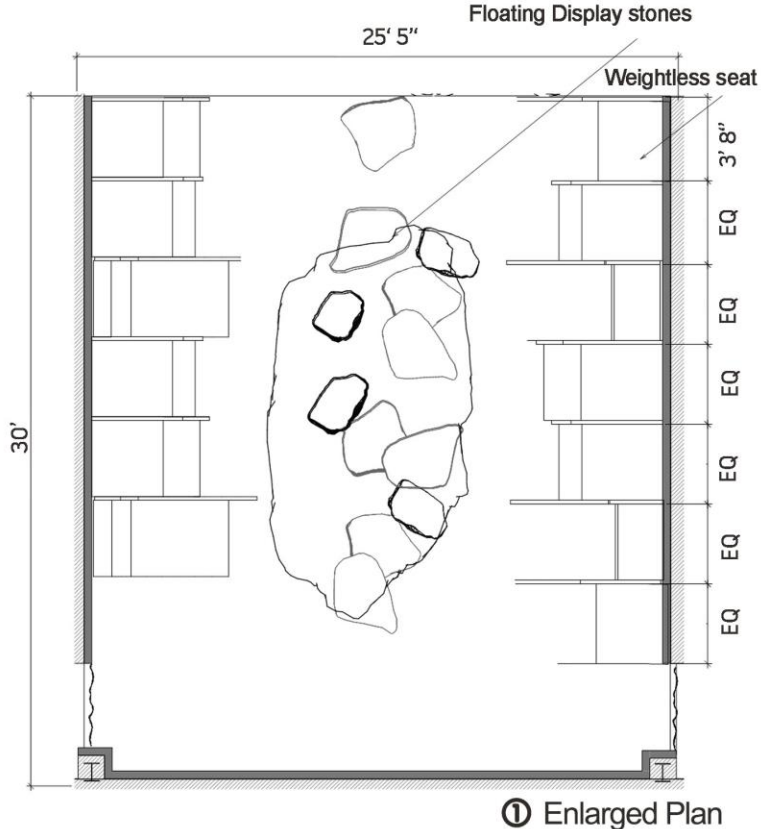
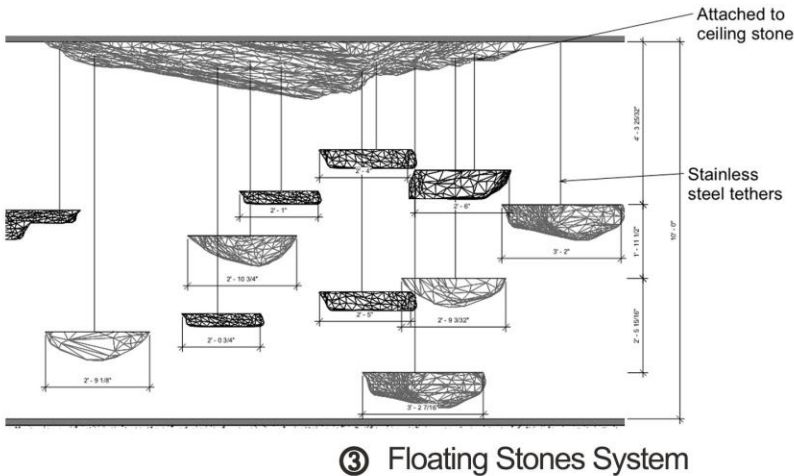
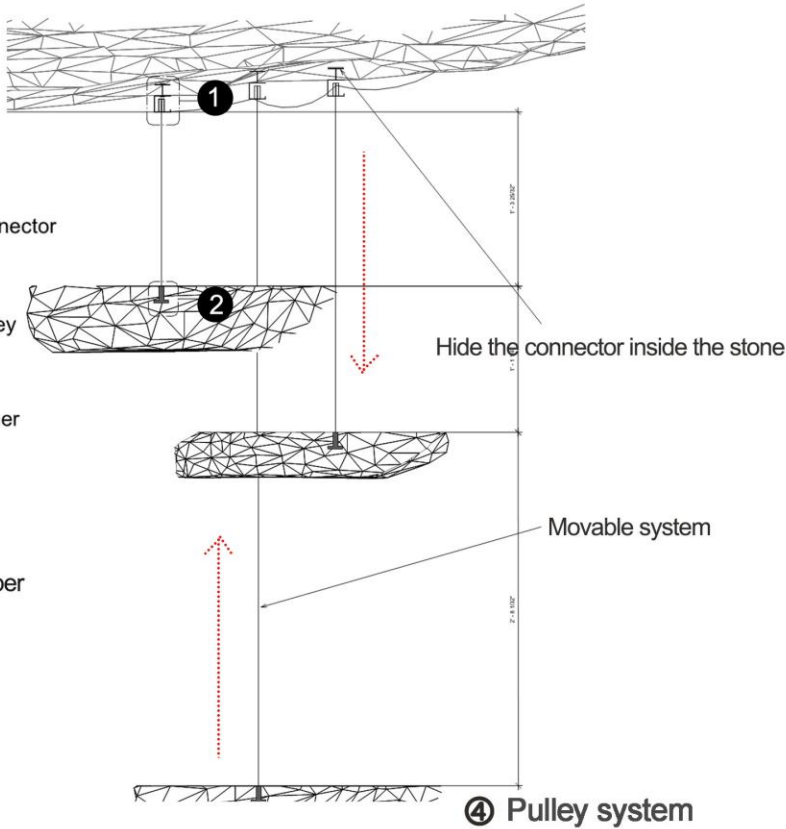
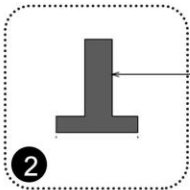
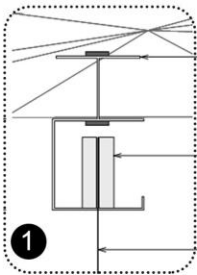
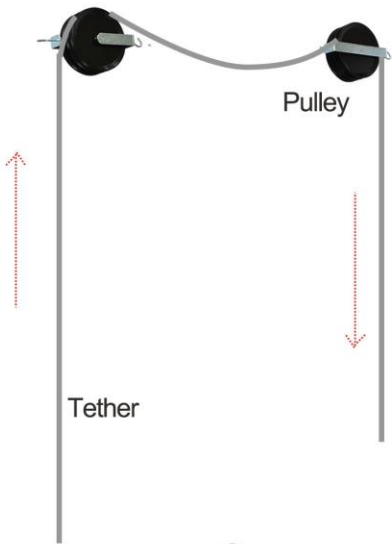
View from the showroom seat



Sitting inside the weightless seat

Showroom Detail

Showroom Drawings with dimension;construction detail

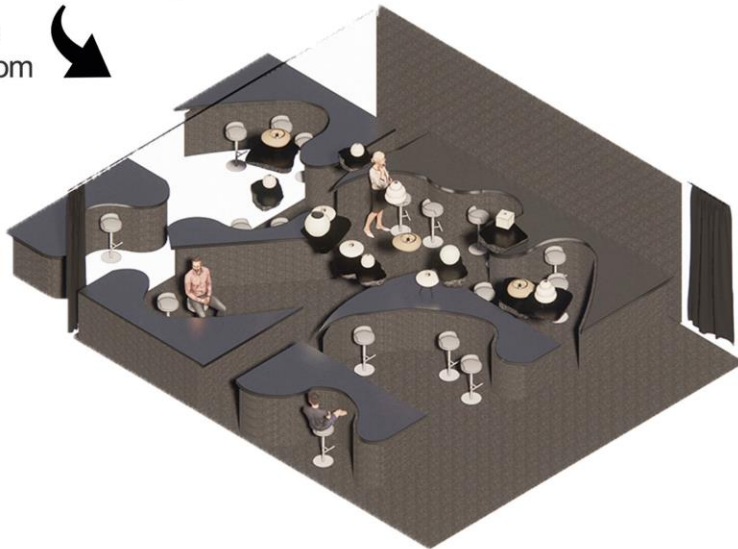


Showroom Reconfiguration

Functioned as lecture/event room



Transformed as
lecture/event room

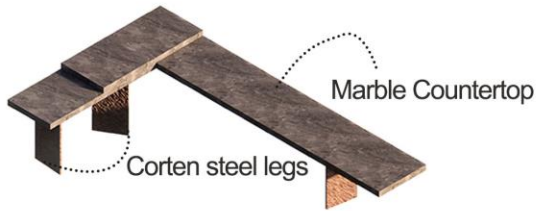


View in the seat



Purchasing Point Rendering

Furniture in purchasing corridor; Distribution of Akari



Customized furniture

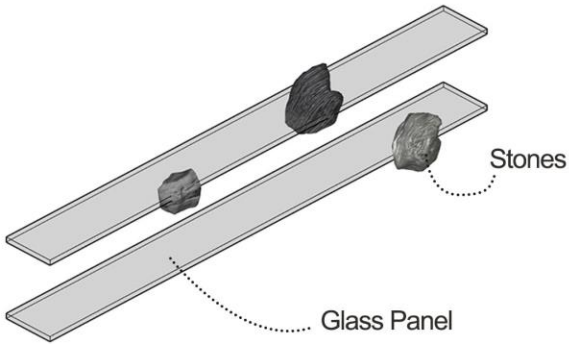


Concept Driver
Juxtaposition of opposites

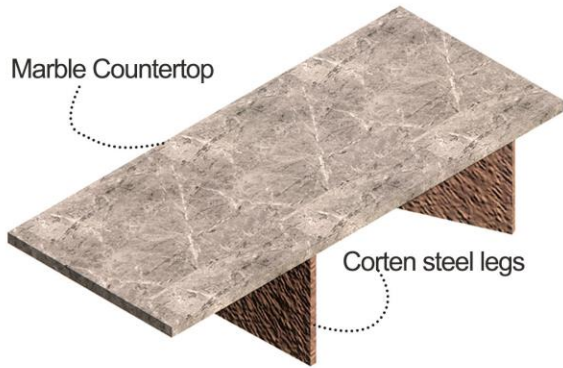


Office Rendering

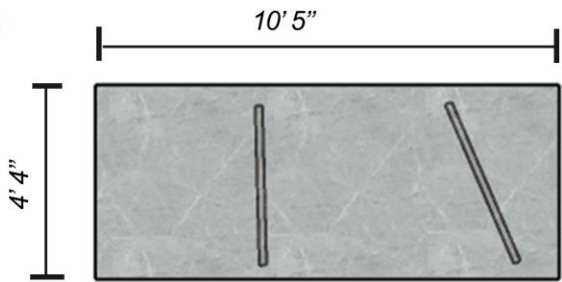
Customized furnitures and perspectives of the office area



Axo of shelf
Floating mass



Axo of office table



Plan



Concept Driver
Juxtaposition of opposites



Elevation



Outdoor Cafe Rendering

View from the cafe; apply of floating system



Garden in night

The Akari are attached to the stones as illumination while the location is random and dynamic, with this distribution bringing the Akari into nature and in this way giving vitality and life to each of them.

Spatial Sequence

Continuity of shopping experience

