

# Noguchi's Memorials to the Atomic Dead

The Noguchi Museum  
Long Island City, NY  
June 2 – September 5, 2021

All works by Isamu Noguchi and Collection of  
The Isamu Noguchi Foundation and Garden Museum,  
New York, unless otherwise noted.

## AREA 3



*Trinity*, 1945  
(cast 1974)  
Bronze



*Vishnu*, c. 1960  
Mikage granite



*Atomic Haystack*,  
c. 1982–83  
(fabricated 2019)  
Hot-dipped  
galvanized steel

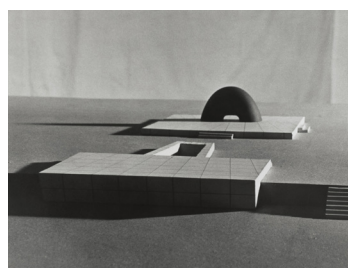
## AREA 6



*Memorial to the Atomic  
Dead*, 1952/1982  
Brazilian granite,  
stainless steel, wood



*Vertical View*,  
1973  
Miharu granite



*Memorial to the Dead,  
Hiroshima* (unrealized  
model), 1952.  
Photo: Isamu Noguchi.  
The Noguchi Museum  
Archives, 152017

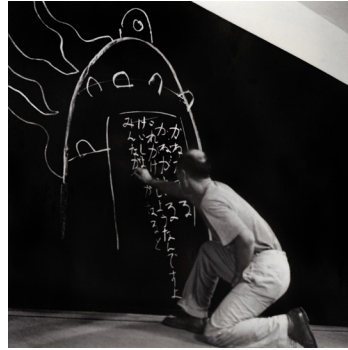
# Noguchi's Memorials to the Atomic Dead

The Noguchi Museum  
Long Island City, NY  
June 2 – September 5, 2021

## AREA 5



*Sculpture to Be Seen From Mars*  
(unrealized model), 1947.  
Photo: Soichi Sunami.  
The Noguchi Museum Archives, 01646.



Isamu Noguchi writing his father's poem "Kane ga naru" at his exhibition at Mitsukoshi Department Store, Tokyo, August 1950. The Noguchi Museum Archives, 03792



*Okame*  
(Atomic Head; Hiroshima Mask), 1954  
Iron



Installation view of *Isamu Noguchi*, Mitsukoshi Department Store, Tokyo, Japan, August 18–August 27, 1950. Photo: Isamu Noguchi. The Noguchi Museum Archives, 08819.6



Isamu Noguchi in the ruins of Hiroshima, Japan, 1951.  
The Noguchi Museum Archives, 08846.1



*Kohabito (The Lovers)*, 1950, in *Isamu Noguchi*, Mitsukoshi Department Store, Tokyo, August 18–August 27, 1950. Photo: Isamu Noguchi. The Noguchi Museum Archives, 08821.5

# Noguchi's Memorials to the Atomic Dead

The Noguchi Museum  
Long Island City, NY  
June 2 – September 5, 2021

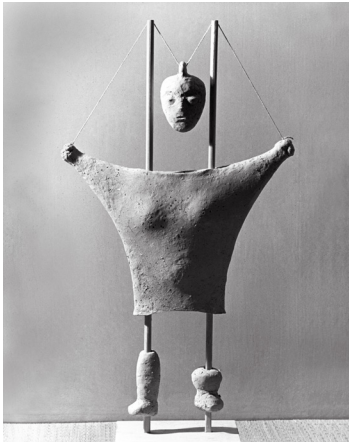
## AREA 5



*Hot Day*, 1950,  
in *Isamu Noguchi*,  
Mitsukoshi Department  
Store, Tokyo, August  
18–August 27, 1950.  
Photo: Isamu Noguchi.  
The Noguchi Museum  
Archives, 08821.4



*Bell Tower for  
Hiroshima*, 1950  
(partially reconstructed  
1986)  
Terra-cotta, wood



*Child*, 1950,  
in *Isamu Noguchi*,  
Mitsukoshi Department  
Store, Tokyo, August  
18–August 27, 1950.  
Photo: Isamu Noguchi.  
The Noguchi Museum  
Archives, 08821.2



*Love of Two Boards*,  
1950  
Seto stoneware



*Bell Child*, 1950,  
in *Isamu Noguchi*,  
Mitsukoshi Department  
Store, Tokyo, August  
18–August 27, 1950.  
Photo: E. Irving  
Blomstrann.  
The Noguchi Museum  
Archives, 01695



*Ghost*, 1952  
Seto stoneware



# Noguchi's Memorials to the Atomic Dead

The Noguchi Museum  
Long Island City, NY  
June 2 – September 5, 2021

## AREA 5



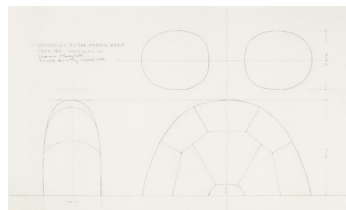
Hiroshima, Japan,  
c. 1951.  
Photo: Isamu Noguchi.  
The Noguchi Museum  
Archives, 08848.2



Hiroshima, Japan,  
c. 1951.  
Photo: Isamu Noguchi.  
The Noguchi Museum  
Archives, 09670.4



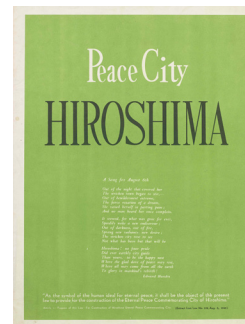
Hiroshima, Japan,  
c. 1951.  
Photo: Isamu Noguchi.  
The Noguchi Museum  
Archives, 05211



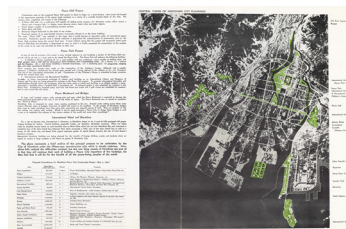
*Memorial to the Atomic  
Dead, 1952/1982*  
Graphite on tracing paper



Genbaku Dome,  
Hiroshima Peace  
Memorial; Hiroshima,  
Japan, 1951. Photo:  
Isamu Noguchi. The  
Noguchi Museum  
Archives, 08846.3



Peace City Hiroshima  
Brochure, c 1950.  
The Noguchi  
Museum Archives,  
MS\_PROJ\_066\_004



Postcards of  
Hiroshima, Japan,  
c. 1950s



Hiroshima, Japan,  
c. 1951.  
Photo: Isamu Noguchi.  
The Noguchi Museum  
Archives, 08828.3

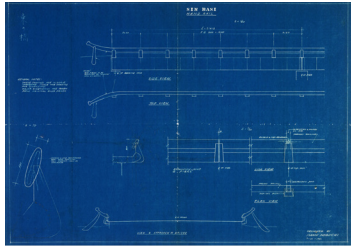


"Project: Hiroshima  
Memorial to the Dead."  
*Arts & Architecture* 70,  
no. 4 (April 1953):  
16– 17. The Noguchi  
Museum Archives,  
BM\_JOU\_0257\_1953

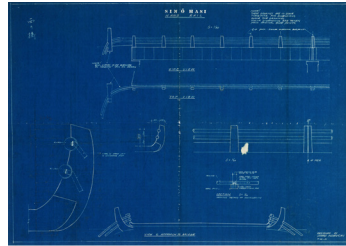
# Noguchi's Memorials to the Atomic Dead

The Noguchi Museum  
Long Island City, NY  
June 2 – September 5, 2021

## AREA 5



Blueprint for Hiroshima Bridges, 1951-52  
The Noguchi Museum Archives, 00235



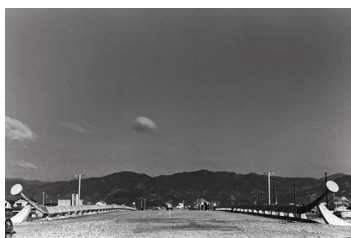
Blueprint for Hiroshima Bridges, 1951-52  
The Noguchi Museum Archives, 00236



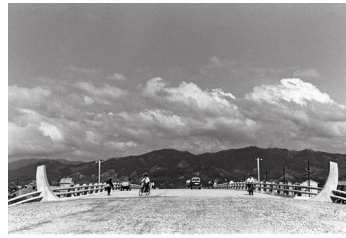
*Tsukuru (To Build)*,  
east bridge, Hiroshima,  
1950s. Photo: Isamu  
Noguchi. The Noguchi  
Museum Archives,  
08862.1



*Yuku (To Depart)*,  
west bridge, Hiroshima,  
1950s. Photo: Isamu  
Noguchi. The Noguchi  
Museum Archives,  
08872.4



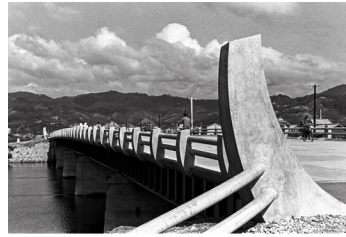
*Tsukuru (To Build)*,  
east bridge, Hiroshima,  
1950s. Photo: Isamu  
Noguchi. The Noguchi  
Museum Archives,  
08861.2



*Yuku (To Depart)*,  
west bridge, Hiroshima,  
1950s. Photo: Isamu  
Noguchi. The Noguchi  
Museum Archives,  
08852.2



*Tsukuru (To Build)*,  
east bridge, Hiroshima,  
1950s. Photo: Isamu  
Noguchi. The Noguchi  
Museum Archives,  
08878.1



*Yuku (To Depart)*,  
west bridge, Hiroshima,  
1950s. Photo: Isamu  
Noguchi. The Noguchi  
Museum Archives,  
08863.1

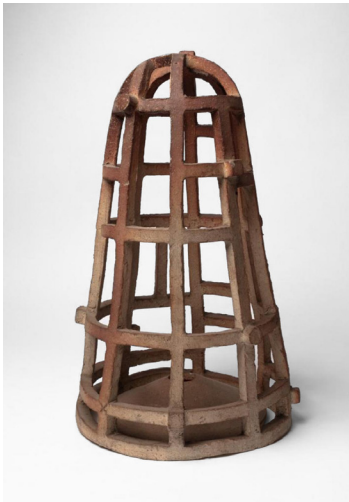
# Noguchi's Memorials to the Atomic Dead

The Noguchi Museum  
Long Island City, NY  
June 2 – September 5, 2021

## AREA 5



Isamu Noguchi  
Fabricated by Kenjiro Okazaki, Takahiro Kamimura,  
Takafumi Yagi, Tomoto Kitazawa, and students.  
*Site Plan Model for Memorial to the Dead, Hiroshima*, 1952  
(fabricated 2013). Wood and plaster.  
Gift of Musashino Art University Museum & Library, Tokyo, Japan



*Cage Vase*, 1952  
Shigaraki stoneware  
Private collection



*Skin and Bones*,  
1950  
Seto stoneware,  
wood, hemp  
Gift of Tsutomu Hiroi