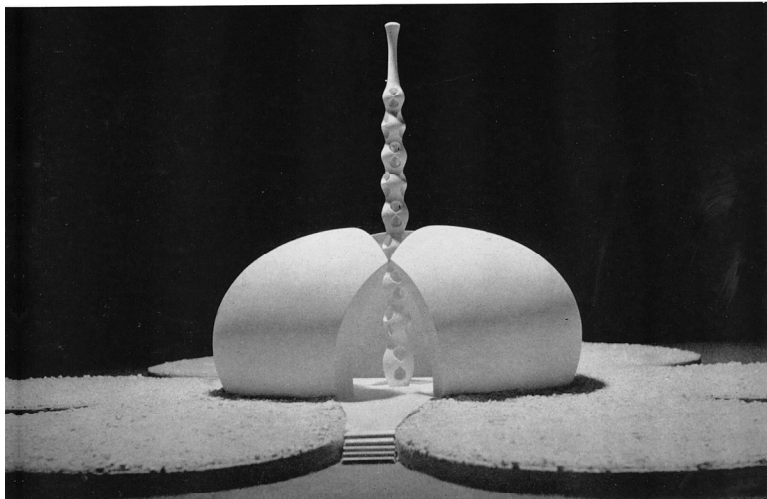
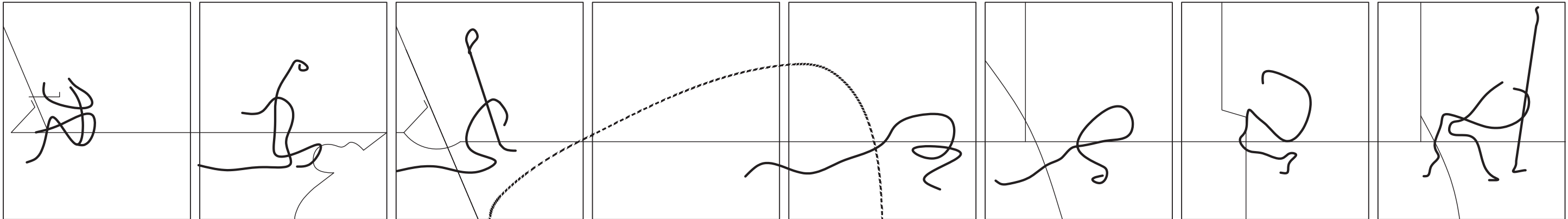


CONTAINMENT AND INFINITY

Christine Gao



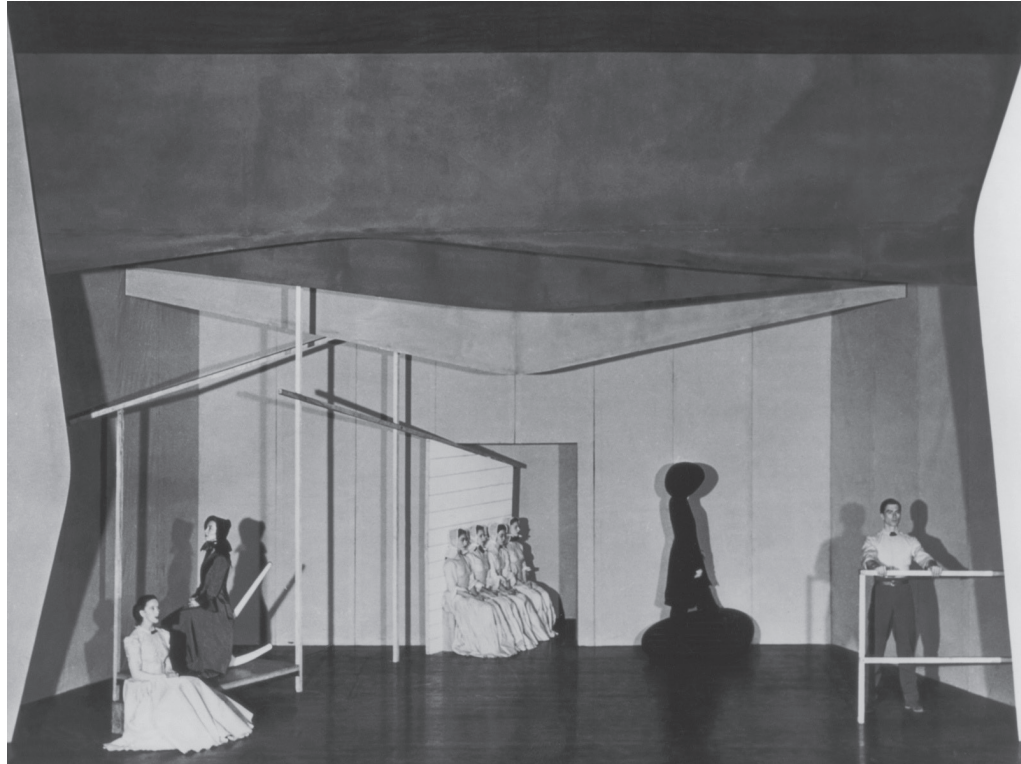
Cornell AAP Department of Architecture
CURATING MODEL BEHAVIOR Arch 4509/6509 Spring 2020 Seminar
Instructor: Naomi Frangos, Visiting Associate Professor in Architecture



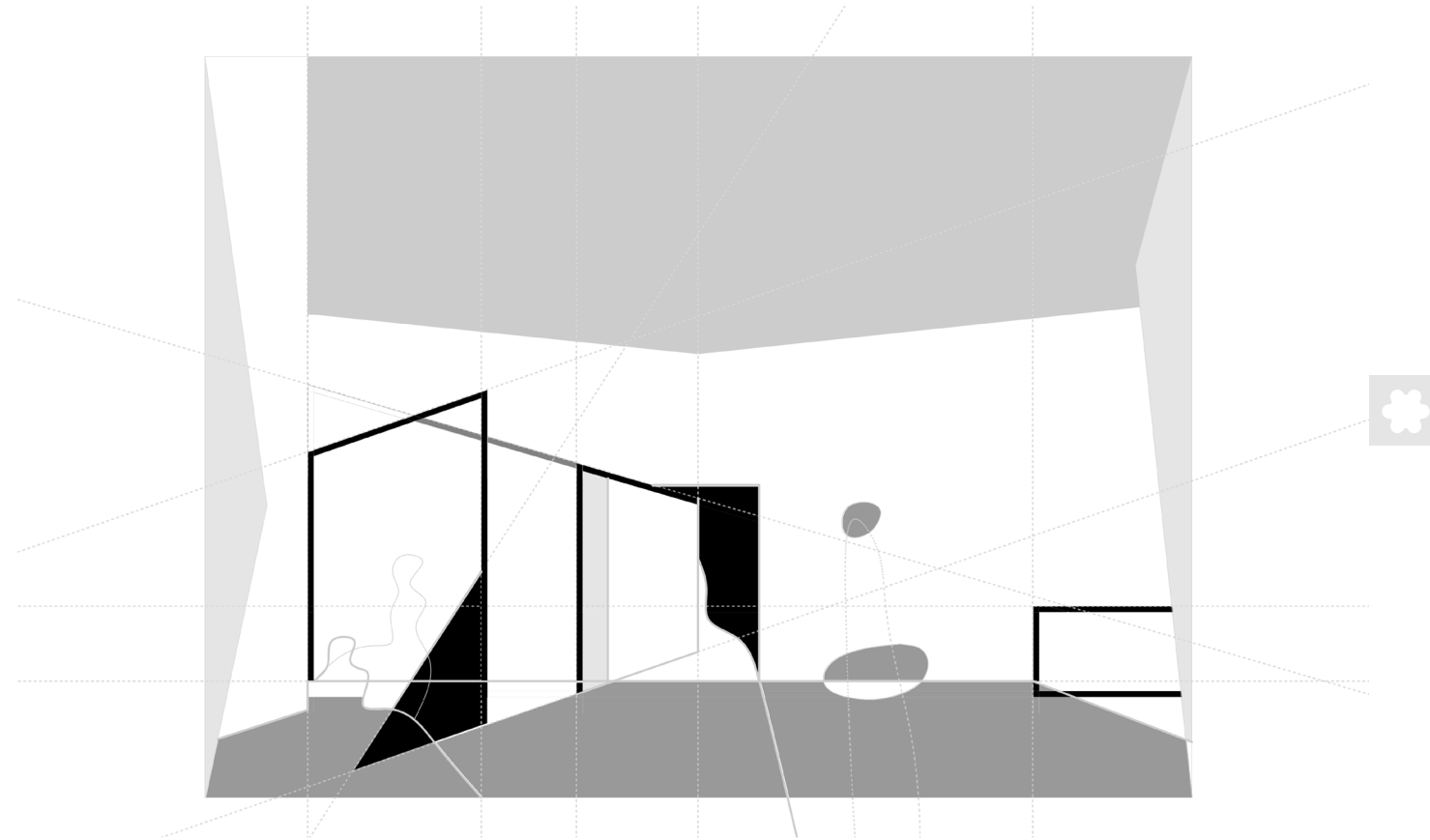
Contract and Release

These snapshots from my video clip provided the basis of my analysis of the performers in space. Each panel captures a moment in time of the performer's intrusion into the architectural settings. The aggregation of panels narrates the sequential movement of contraction and expansion- the female dancer, originally curled up in a ball, unfurls in space. The camera then sweeps to the male dancer, who performs the opposite sequence from expansion to contraction.

Juxtapositions between stationary objects and moving performers are established through different line qualities. The contours of the dancers are rendered in fluid and loose manner, while the devices are rendered in a more rigid and regulated geometry.



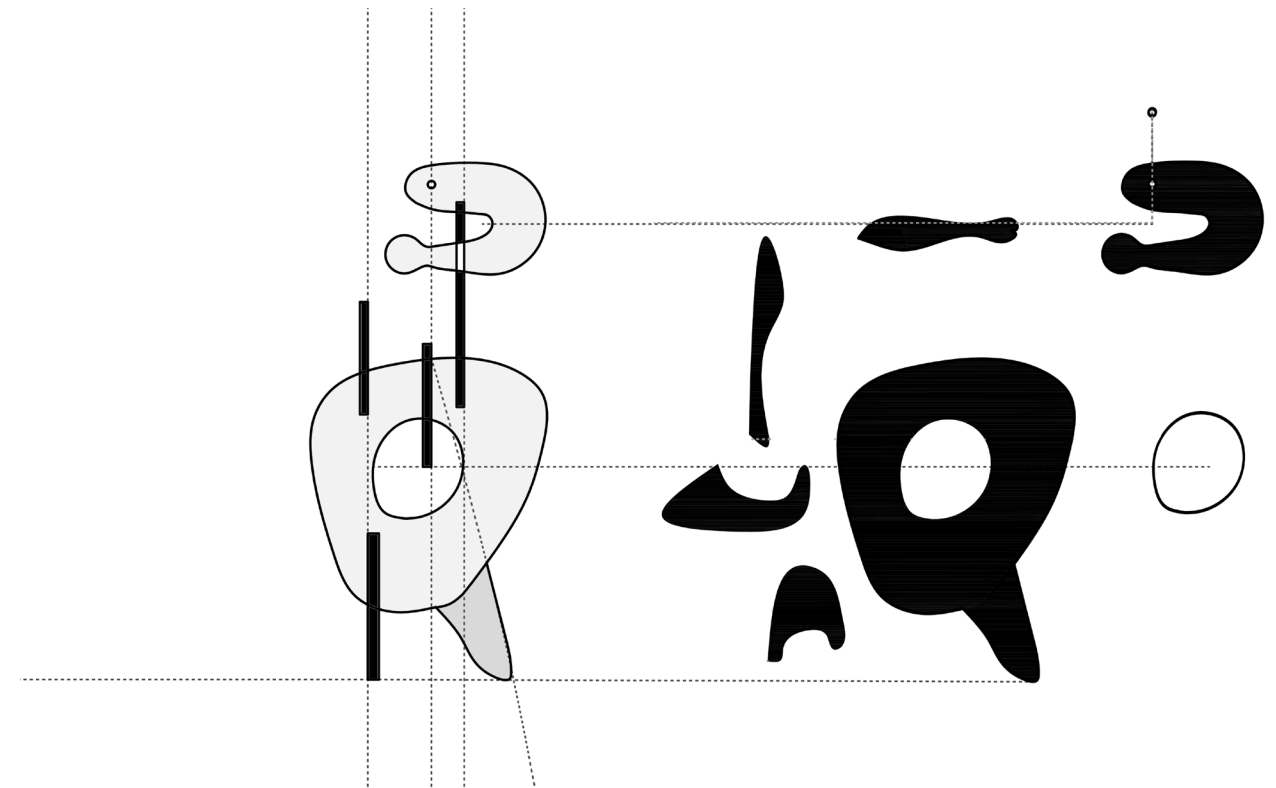
Appalachian Spring (1944)



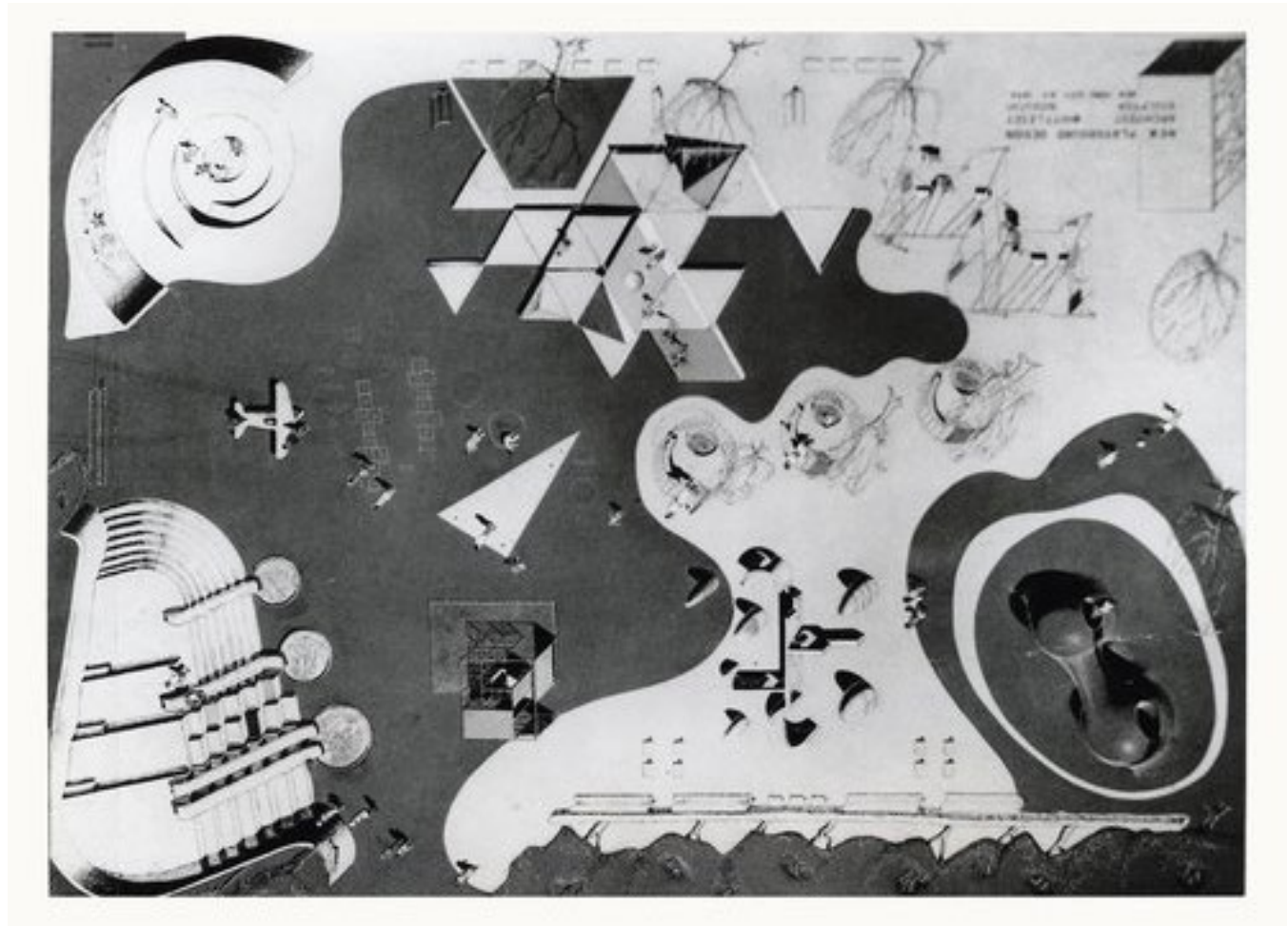
Frame and Body Analysis



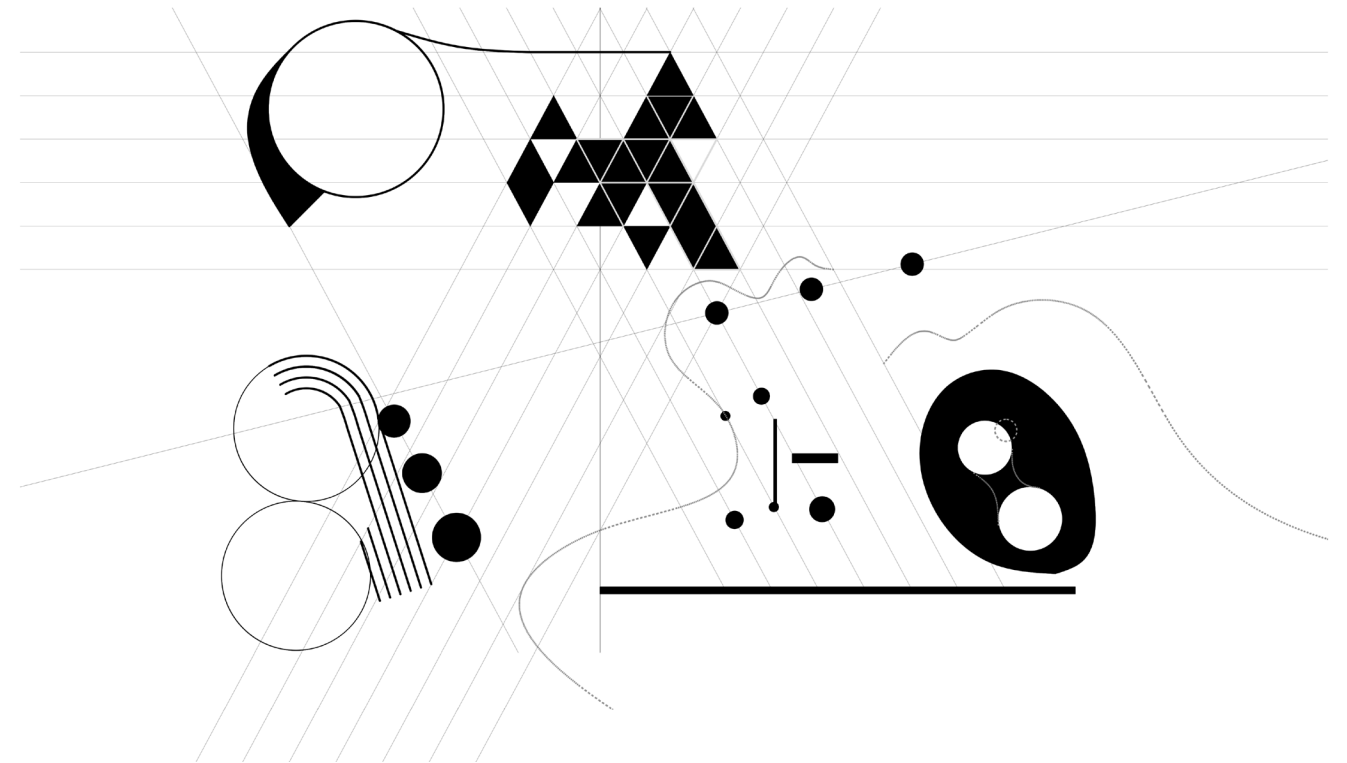
Fish Face



Fragmentation and Alignment Analysis



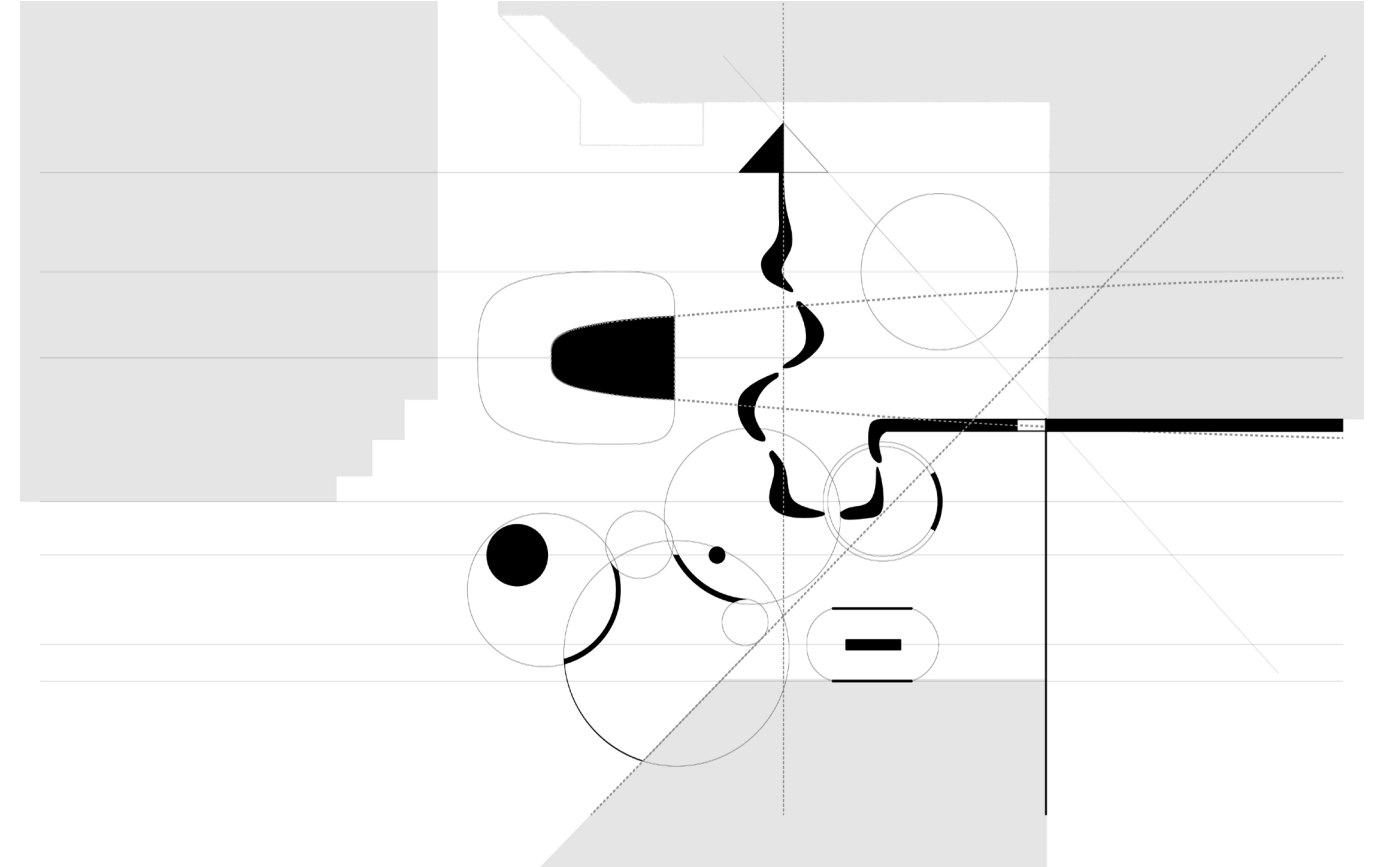
United Nations Playground, 1952



Aggregation of Geometry Analysis



California Scenario (Costa Mesa, California 1980-1982)



Continuity of Limits Study