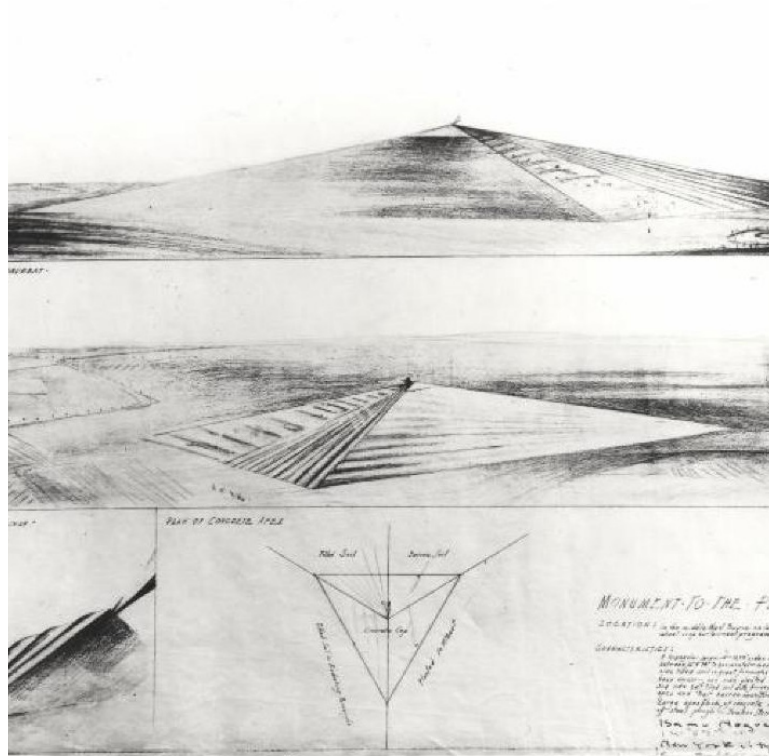


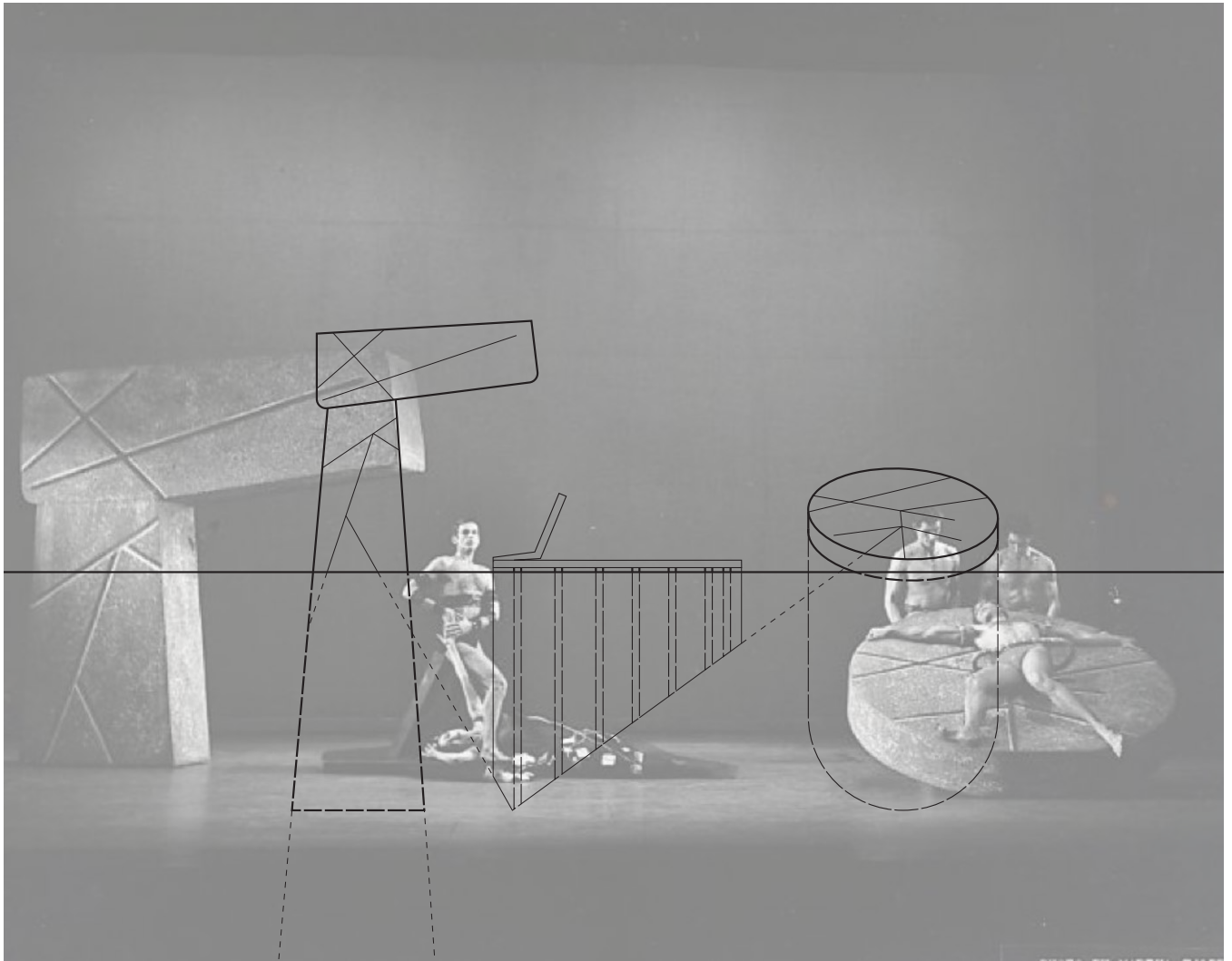
EMERGENCE
BRANDON NOLASCO



Cornell AAP Department of Architecture
CURATING MODEL BEHAVIOR Arch 4509/6509 Spring 2020 Seminar
Instructor: Naomi Frangos, Visiting Associate Professor in Architecture

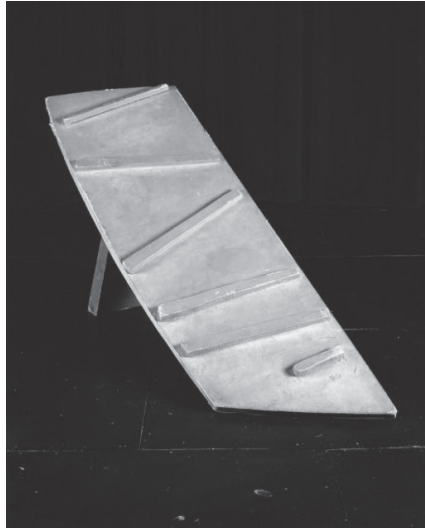


Alceste | 1960 | Stage Set



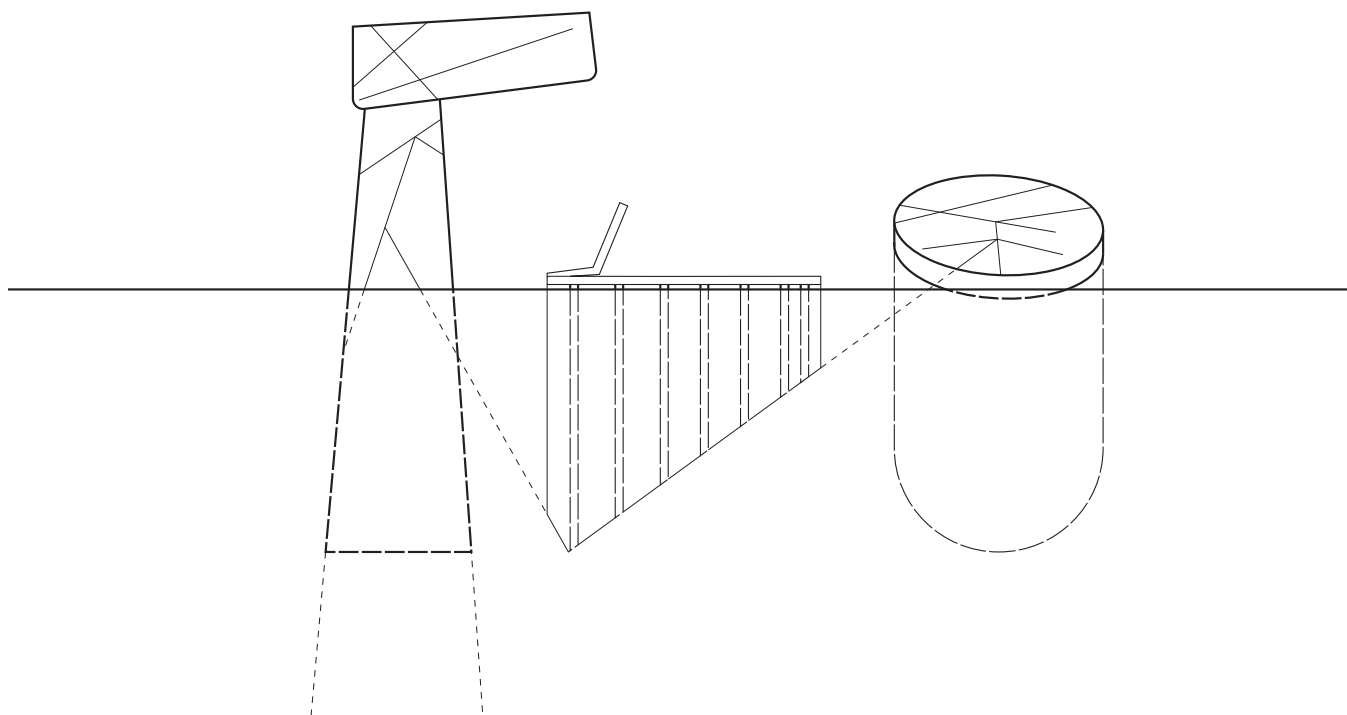
SUBMERGED WORLD 1

Brandon Nolasco



Alcestis | 1960 | Stage Set

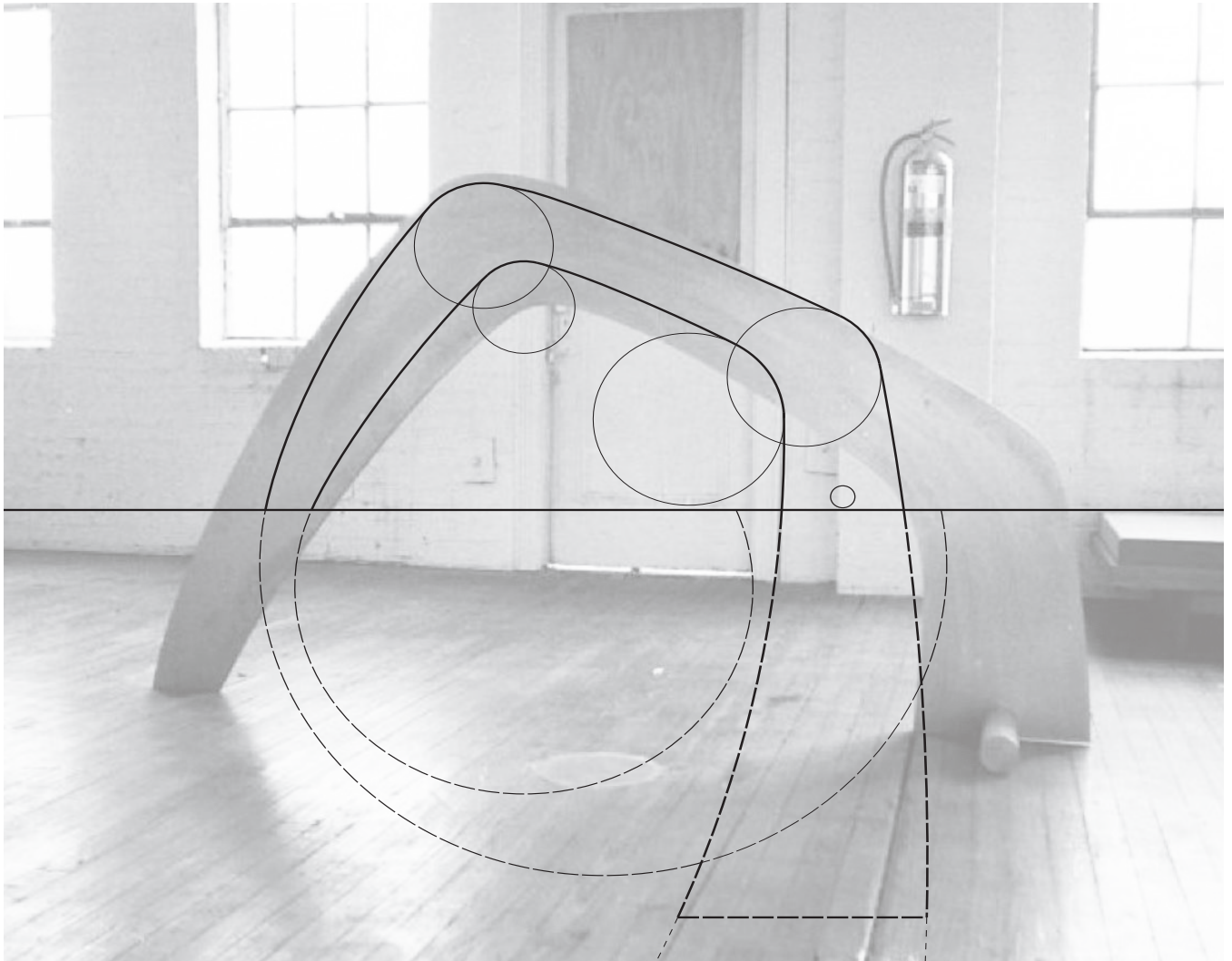
EMERGENCE



“That which emerges from the earth. Objects in transit from one state to another.” -NOGUCHI



Untitled #481 | 1958 | Sculpture

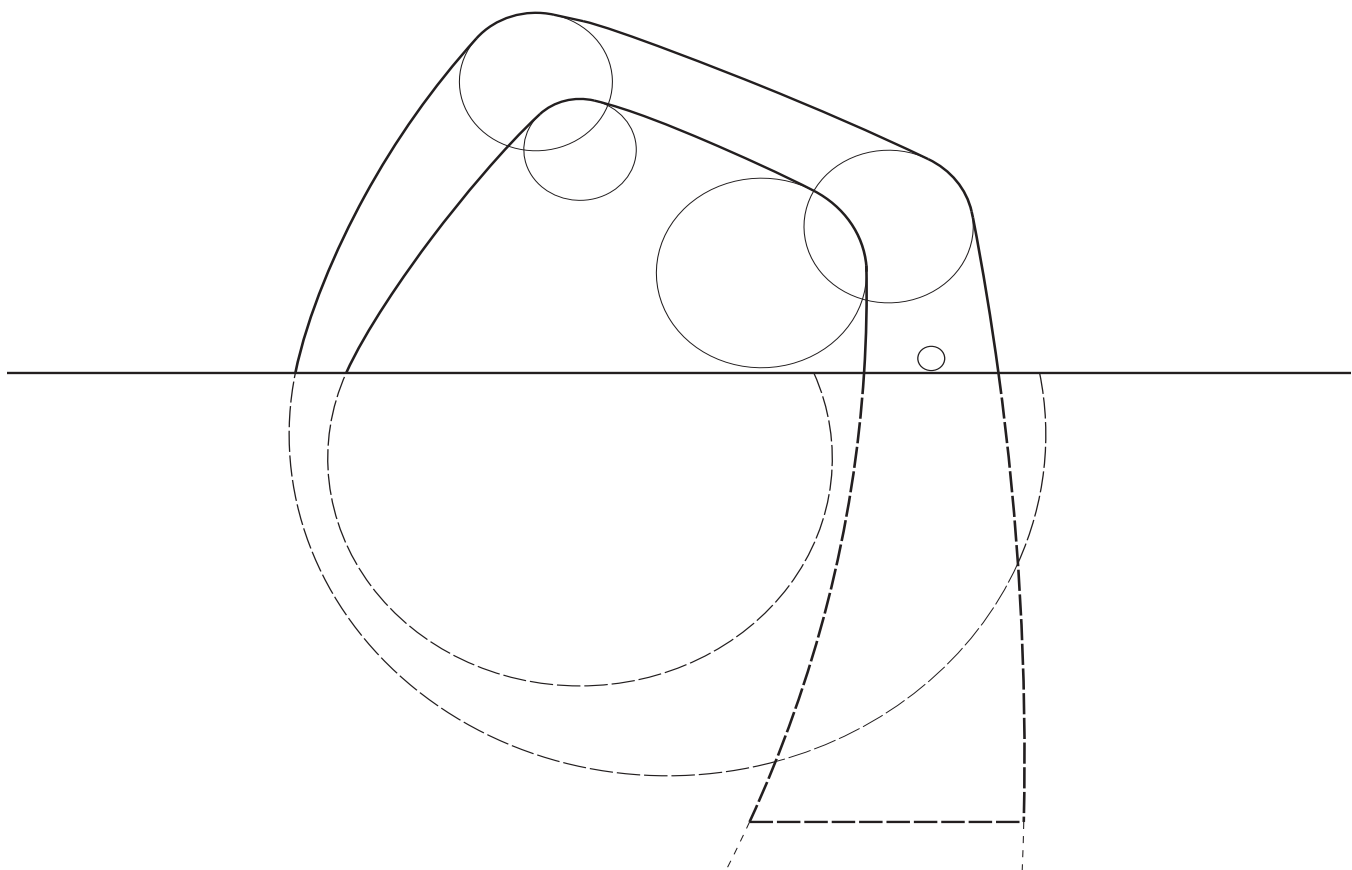


SUBMERGED WORLD 2

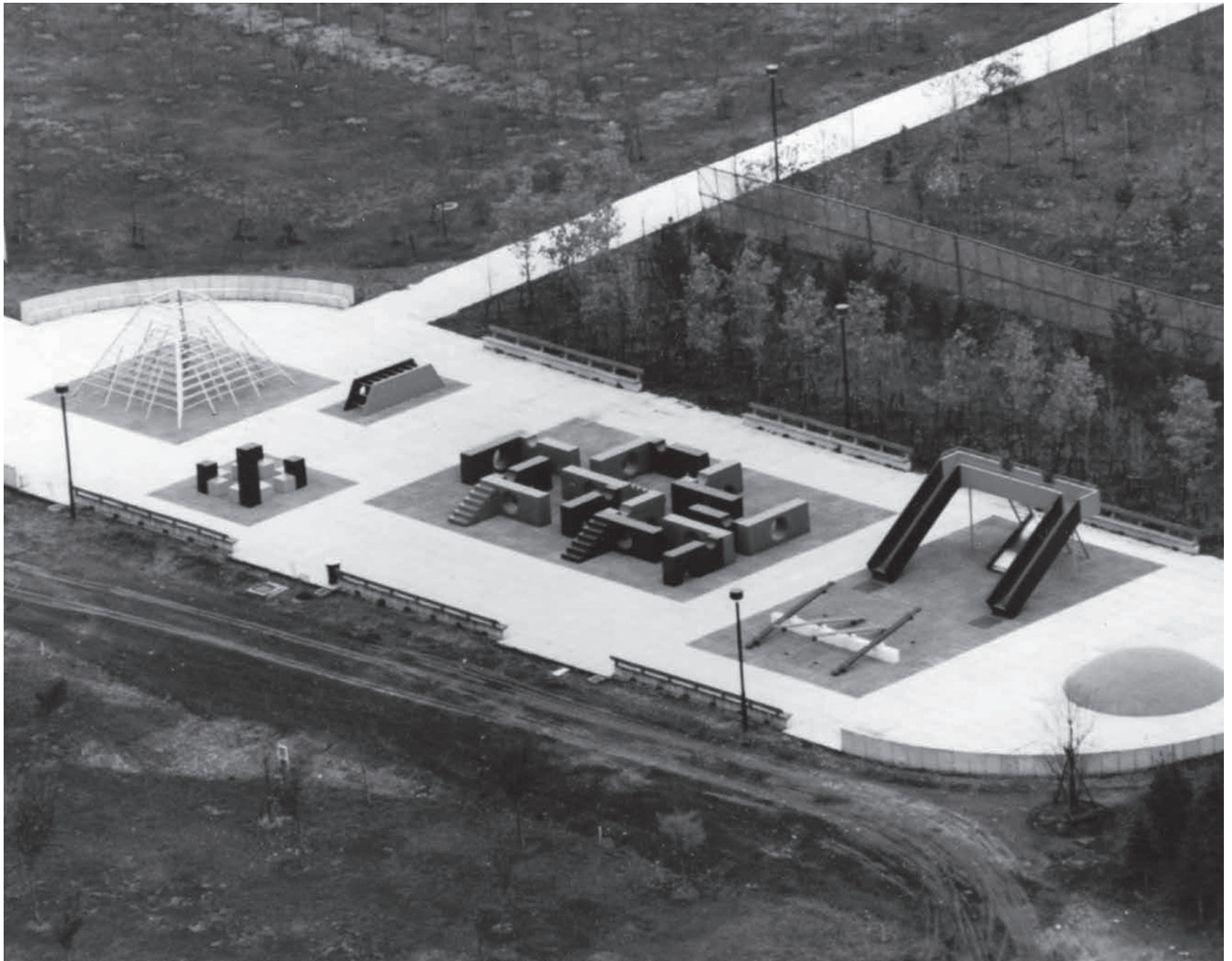
Brandon Nolasco



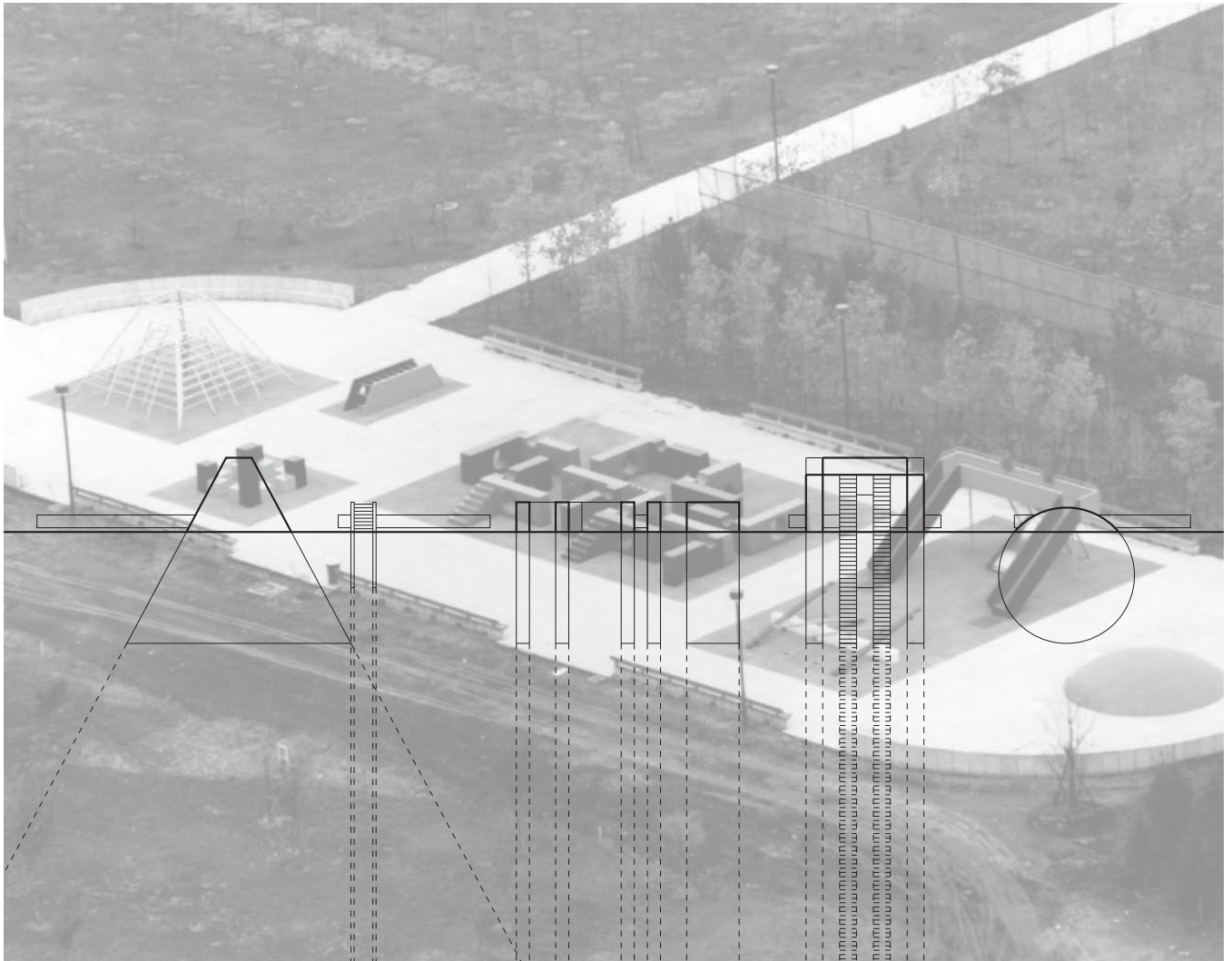
Untitled #481 | 1958 | Sculpture



“That which emerges from the earth. Objects in transit from one state to another.” -NOGUCHI



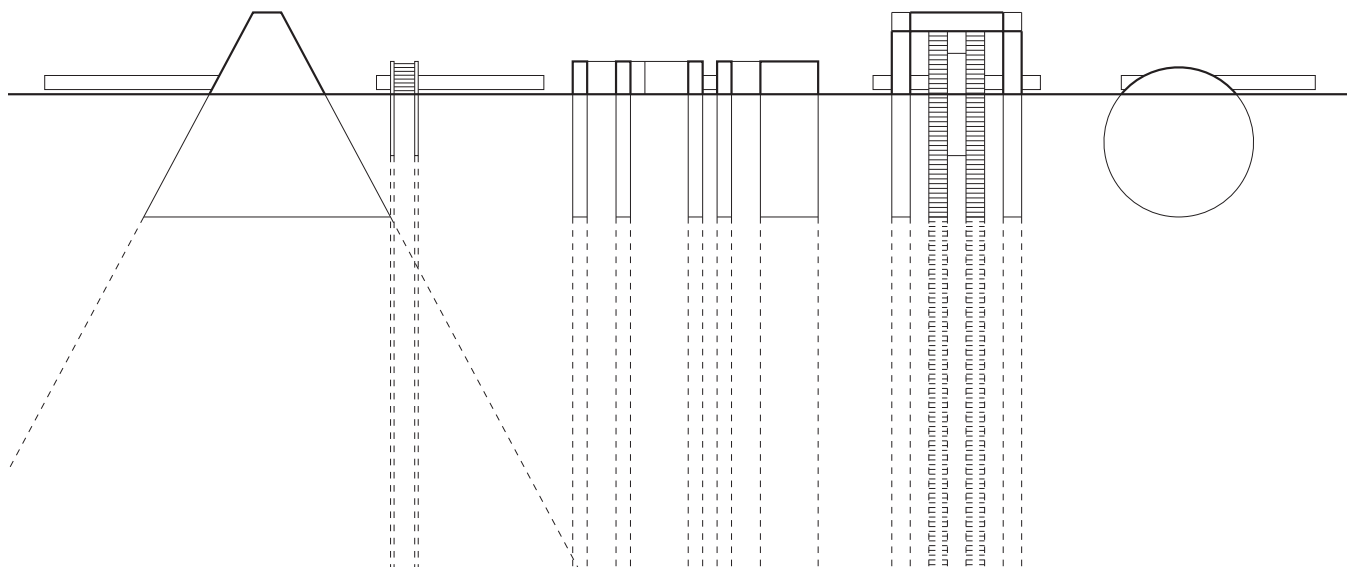
Moere-numa Koen | 2005 | Playscape



SUBMERGED WORLD 3



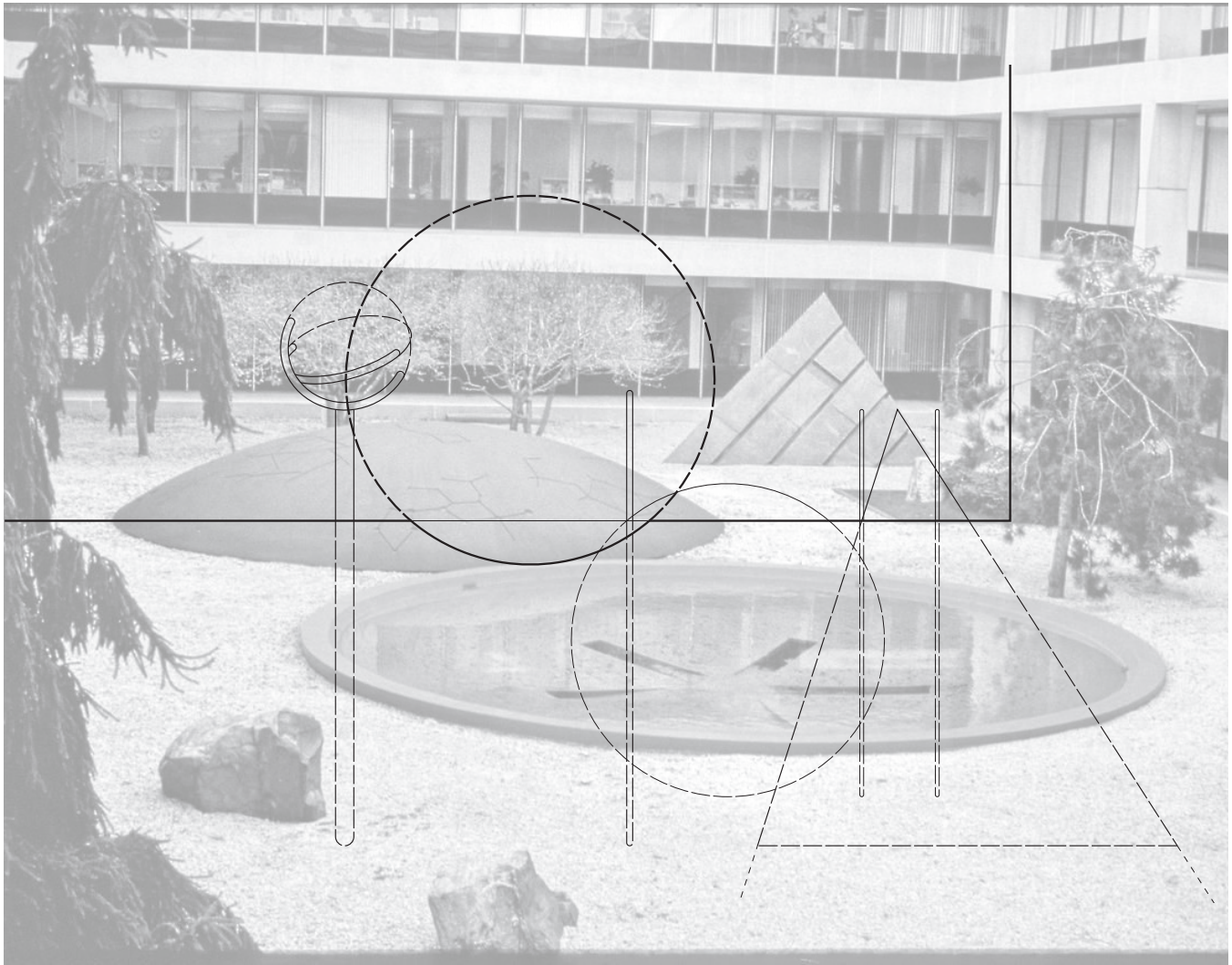
Moere-numa Koen | 2005 | Playscape



“That which emerges from the earth. Objects in transit from one state to another.” -NOGUCHI



Garden of the Future | 1965 | Urban Design

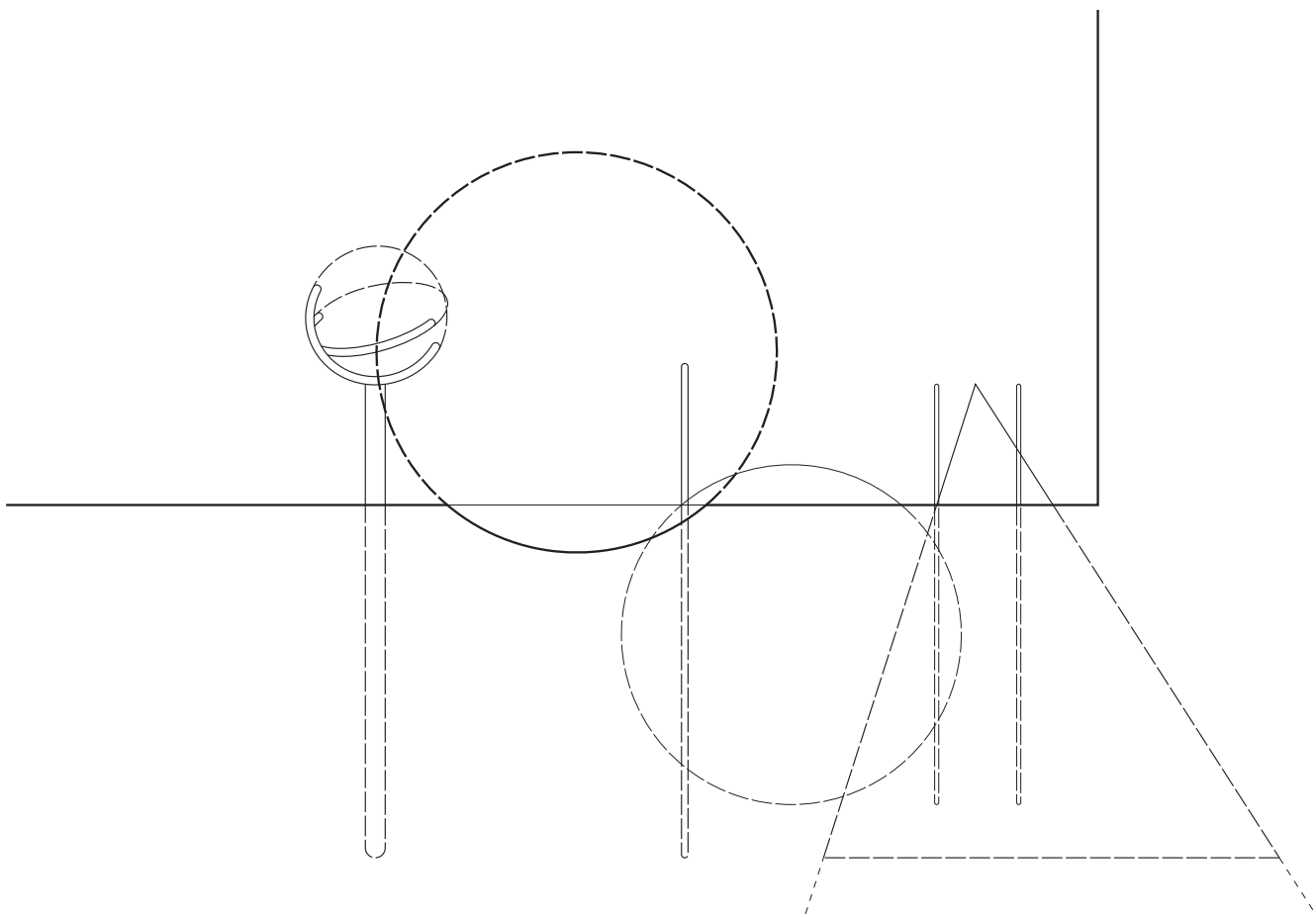


SUBMERGED WORLD 4

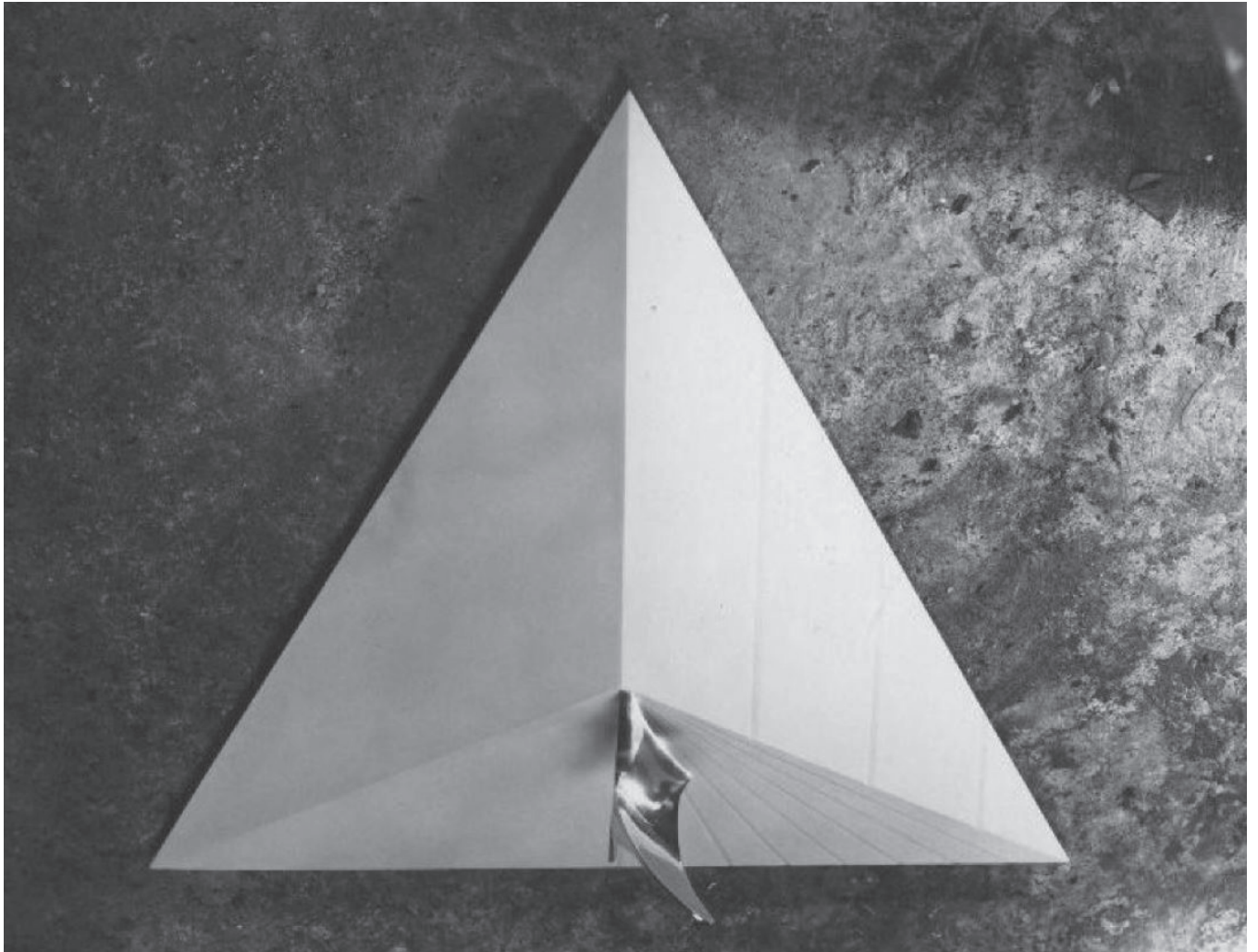
Brandon Nolasco



Garden of the Future | 1965 | Urban Design

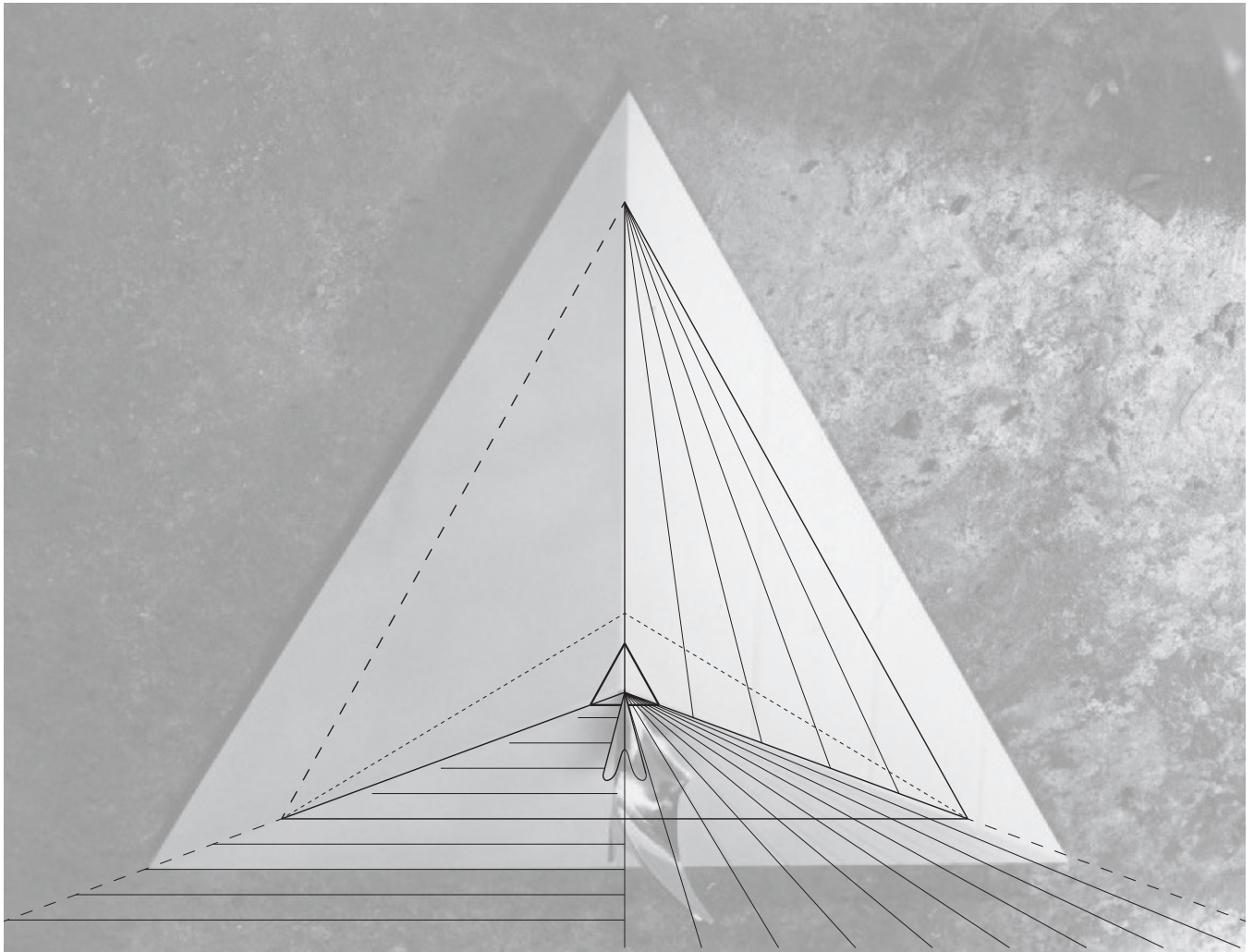


“That which emerges from the earth. Objects in transit from one state to another.” -NOGUCHI



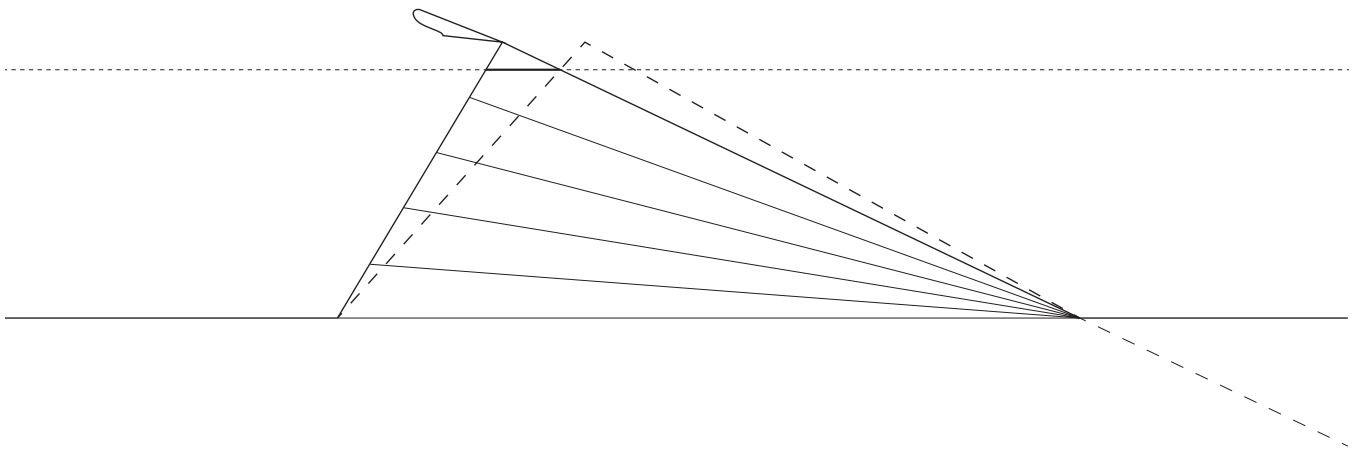
Monument To The Plough | 1933 | Model

EMERGENCE

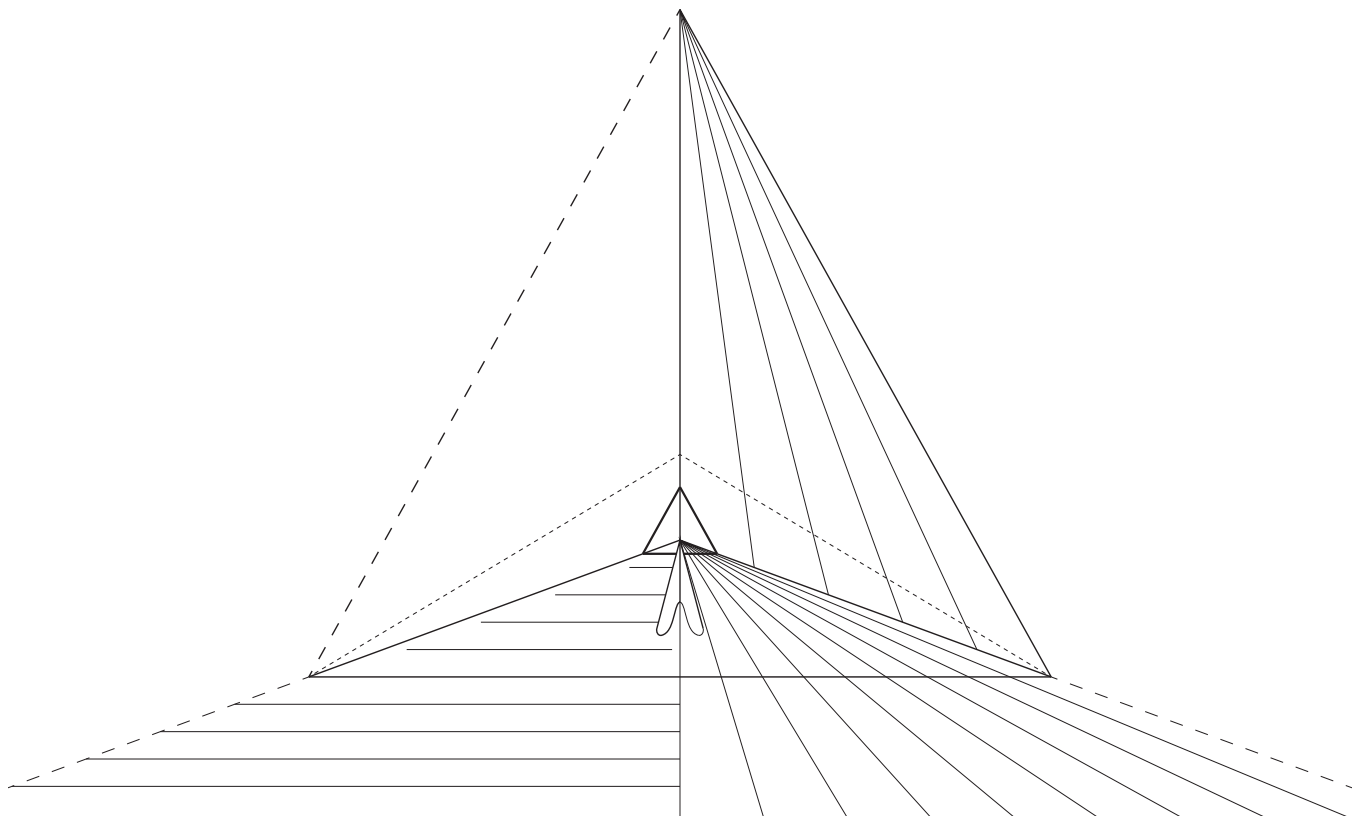


EMERGED WORLD

Brandon Nolasco



EMERGENCE



“That which emerges from the earth. Objects in transit from one state to another.” -NOGUCHI